

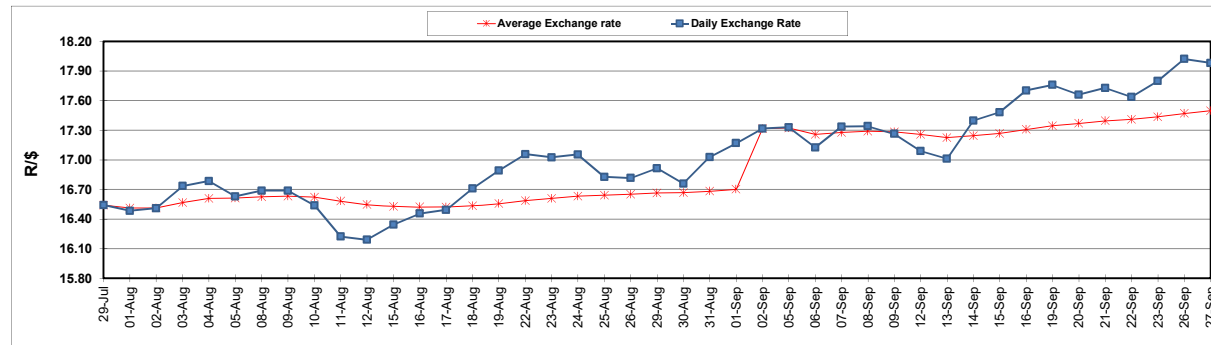
	PETROL 95 ULP	PETROL 93 ULP & LRP	DIESEL 0.05%	DIESEL 0.005%	ILL. PAR.
GAUTENG PUMP PRICE (SA c/l) AS FROM 07/09/2022	2,338.000	2,295.000	-	-	-
WHOLESALE PRICE (SA c/l) AS FROM 07/09/2022	-	-	2,396.100	2,415.500	1,760.288
SINGLE NATIONAL MAXIMUM RETAIL PRICE	-	-	-	-	2,322.000
BASIC FUEL PRICE - 27/09/2022 (SA c/l)	1,160.174	1,134.427	1,467.090	1,494.544	1,413.614
PRESS RELEASE CONTRIBUTION TO BFP 07/09/2022 - 27/09/2022 (SA c/l)	1,247.750	1,204.750	1,513.630	1,533.030	1,542.128
UNIT OVER/(UNDER) RECOVERY - 27/09/2022 (SA c/l)	87.576	70.323	46.540	38.486	128.514
AVERAGE BASIC FUEL PRICE 02/09/2022 - 27/09/2022	1,177.396	1,146.736	1,536.561	1,559.823	1,496.586
AVERAGE UNIT OVER/(UNDER) RECOVERY 02/09/2022 - 27/09/2022	109.464	97.124	(8.431)	(13.959)	59.208

ANALYSIS MOVEMENT OF AVERAGE OVER/(UNDER) RECOVERY

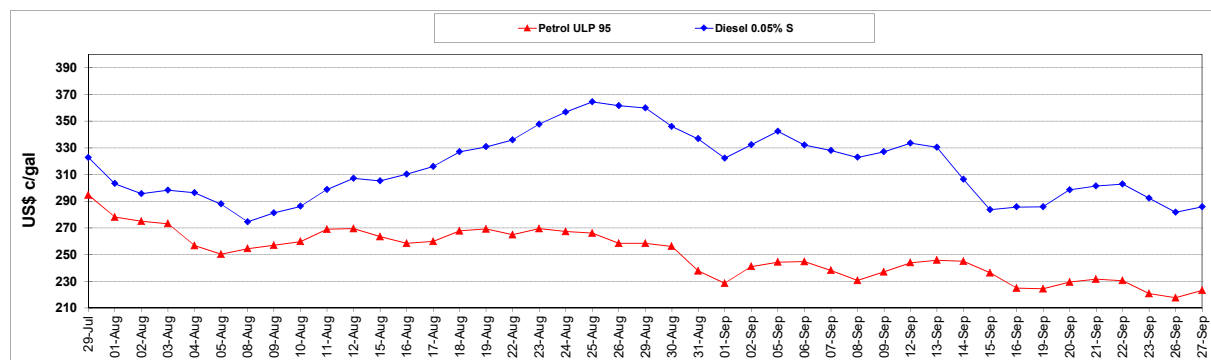
	PETROL 95	PETROL 93	DIESEL 0.05%	DIESEL 0.005%	ILL. PAR.
- MOVEMENT IN INTERNATIONAL PRODUCT PRICES	163.058	149.323	61.512	57.042	127.332
- MOVEMENT IN EXCHANGE RATE	(53.594)	(52.199)	(69.943)	(71.002)	(68.123)
AVERAGE UNIT OVER/(UNDER) RECOVERY 02/09/2022 - 27/09/2022	109.464	97.124	(8.431)	(13.959)	59.208

R/\$ EXCHANGE RATE - (R/\$17.9803 - 27/09/2022)

EXCHANGE RATE USED IN BASIC FUEL PRICE



INTERNATIONAL PRODUCT PRICES OF BASKET USED IN BASIC FUEL PRICE



BASIC FUEL PRICE IN SA CENTS PER LITRE

