

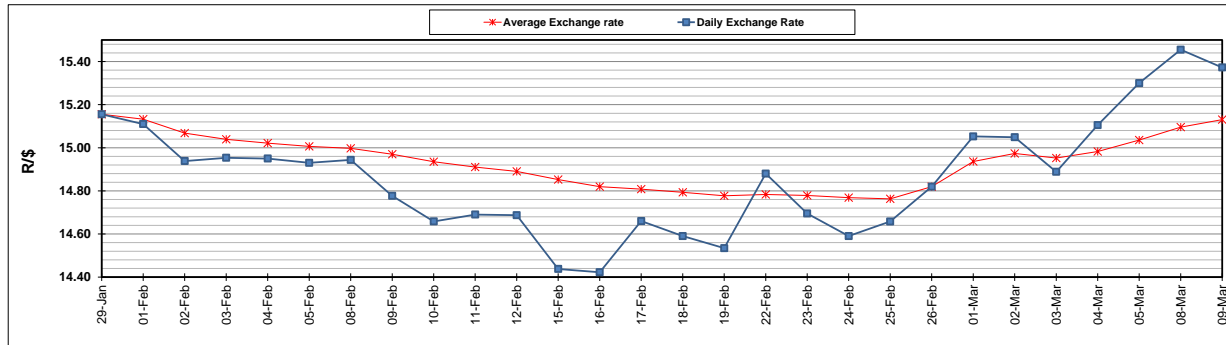
	PETROL 95 ULP	PETROL 93 ULP & LRP	DIESEL 0.05%	DIESEL 0.005%	ILL. PAR.
GAUTENG PUMP PRICE (SA c/l) AS FROM 03/03/2021	1,632.000	1,615.000	-	-	-
WHOLESALE PRICE (SA c/l) AS FROM 03/03/2021	-	-	1,412.420	1,416.820	845.688
SINGLE NATIONAL MAXIMUM RETAIL PRICE	-	-	-	-	1,071.000
BASIC FUEL PRICE - 09/03/2021 (SA c/l)	756.810	744.971	722.898	725.177	701.132
PRESS RELEASE CONTRIBUTION TO BFP 03/03/2021 - 09/03/2021 (SA c/l)	665.170	658.170	653.630	658.030	633.128
UNIT OVER/(UNDER) RECOVERY - 09/03/2021 (SA c/l)	(91.640)	(86.801)	(69.268)	(67.147)	(68.004)
AVERAGE BASIC FUEL PRICE 26/02/2021 - 09/03/2021	730.013	719.734	702.178	705.175	679.736
AVERAGE UNIT OVER/(UNDER) RECOVERY 26/02/2021 - 09/03/2021	(89.218)	(85.939)	(68.798)	(68.145)	(64.233)

ANALYSIS MOVEMENT OF AVERAGE OVER/(UNDER) RECOVERY

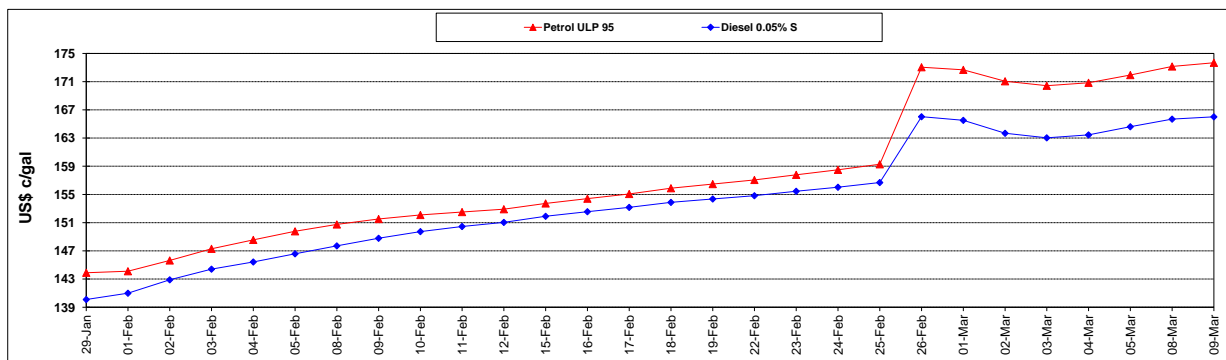
	PETROL 95	PETROL 93	DIESEL 0.05%	DIESEL 0.005%	ILL. PAR.
- MOVEMENT IN INTERNATIONAL PRODUCT PRICES	(71.501)	(68.472)	(51.757)	(51.031)	(47.736)
- MOVEMENT IN EXCHANGE RATE	(17.717)	(17.467)	(17.041)	(17.114)	(16.497)
AVERAGE UNIT OVER/(UNDER) RECOVERY 26/02/2021 - 09/03/2021	(89.218)	(85.939)	(68.798)	(68.145)	(64.233)

R/\$ EXCHANGE RATE - (R/\$15.3725 - 09/03/2021)

EXCHANGE RATE USED IN BASIC FUEL PRICE



INTERNATIONAL PRODUCT PRICES OF BASKET USED IN BASIC FUEL PRICE



BASIC FUEL PRICE IN SA CENTS PER LITRE

