

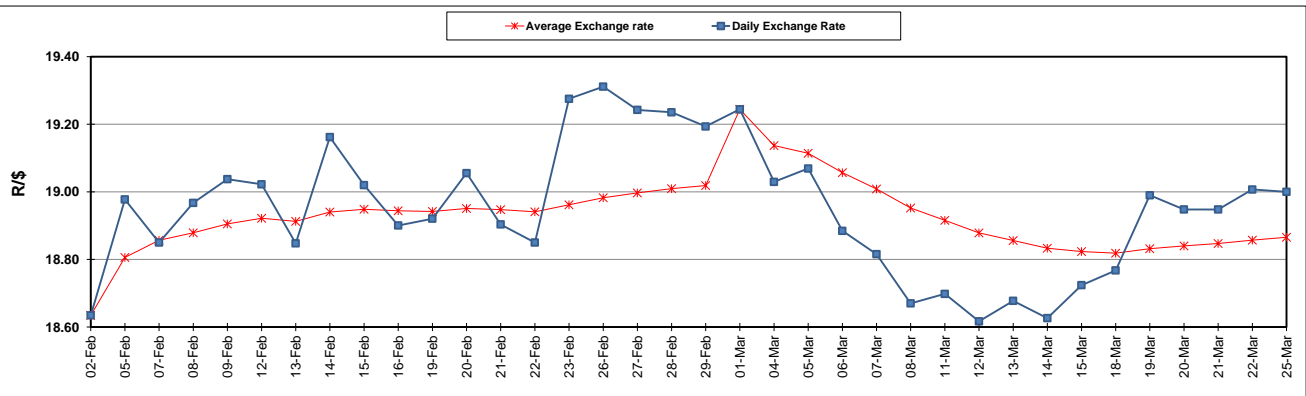
South African Cents per Litre (SA c/l)	PETROL 95 ULP	PETROL 93 ULP & LRP	DIESEL 0.05%	DIESEL 0.005%	ILL. PAR.
GAUTENG PUMP PRICE AS FROM 06/03/2024	2,445.000	2,413.000	-	-	-
WHOLESALE PRICE AS FROM 06/03/2024	-	-	2,241.870	2,261.270	1,647.938
SINGLE NATIONAL MAXIMUM RETAIL PRICE AS FROM 06/03/2024	-	-	-	-	2,137.000
BASIC FUEL PRICE - 25/03/2024	1,433.291	1,396.343	1,384.584	1,400.935	1,368.861
PRESS RELEASE CONTRIBUTION TO BFP 06/03/2024 - 25/03/2024	1,342.870	1,310.870	1,418.630	1,438.030	1,401.128
UNIT OVER/(UNDER) RECOVERY - 25/03/2024	(90.421)	(85.473)	34.046	37.095	32.267
AVERAGE BASIC FUEL PRICE 01/03/2024 - 25/03/2024	1,355.817	1,322.049	1,371.488	1,383.454	1,353.582
AVERAGE UNIT OVER/(UNDER) RECOVERY 01/03/2024 - 25/03/2024	(34.300)	(32.532)	28.613	33.752	36.252

### ANALYSIS MOVEMENT OF AVERAGE OVER/(UNDER) RECOVERY

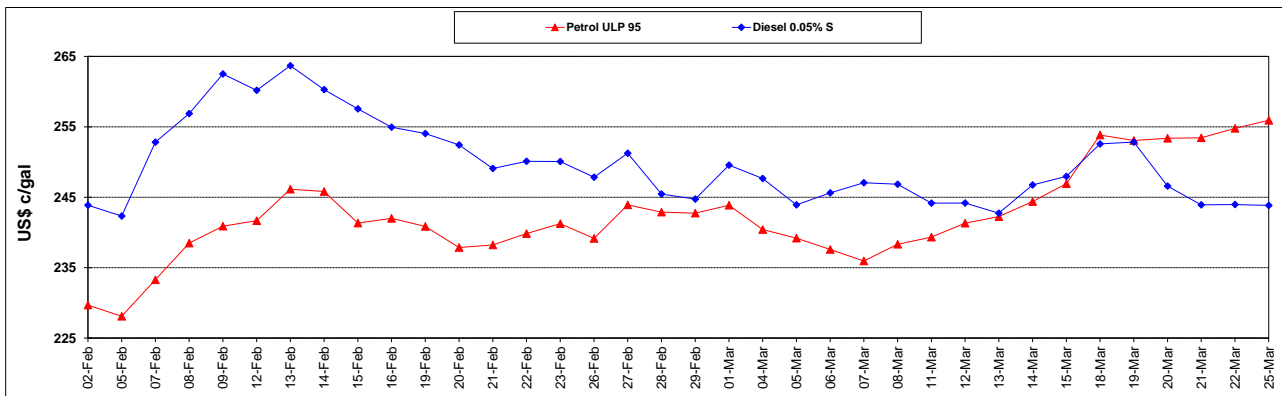
	PETROL 95	PETROL 93	DIESEL 0.05%	DIESEL 0.005%	ILL. PAR.
- MOVEMENT IN INTERNATIONAL PRODUCT PRICES	(45.296)	(43.254)	17.490	22.532	25.274
- MOVEMENT IN EXCHANGE RATE	10.996	10.722	11.123	11.220	10.978
AVERAGE UNIT OVER/(UNDER) RECOVERY 01/03/2024 - 25/03/2024	(34.300)	(32.532)	28.613	33.752	36.252

R/\$ EXCHANGE RATE - (R/\$19.0000 - 25/03/2024)

### EXCHANGE RATE USED IN BASIC FUEL PRICE



### INTERNATIONAL PRODUCT PRICES OF BASKET USED IN BASIC FUEL PRICE



### BASIC FUEL PRICE IN SA CENTS PER LITRE

