

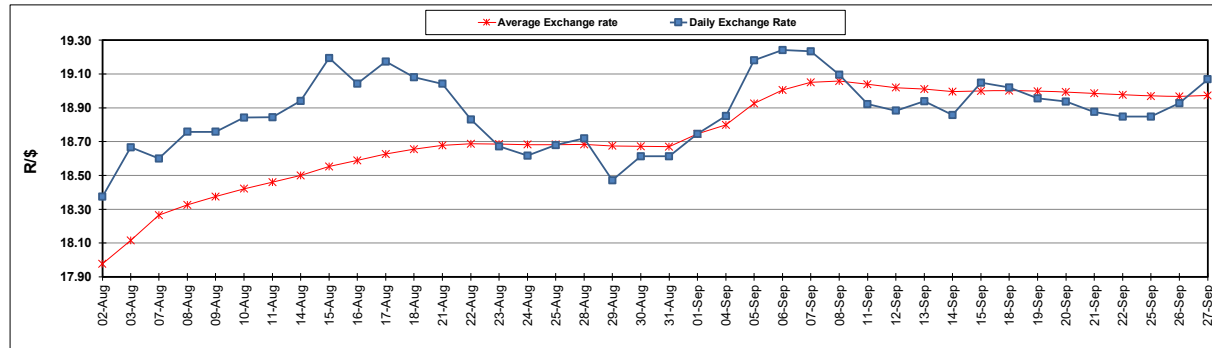
South African Cents per Litre (SA c/l)	PETROL 95 ULP	PETROL 93 ULP & LRP	DIESEL 0.05%	DIESEL 0.005%	ILL. PAR.
GAUTENG PUMP PRICE AS FROM 06/09/2023	2,454.000	2,414.000	-	-	-
WHOLESALE PRICE AS FROM 06/09/2023	-	-	2,305.290	2,328.690	1,741.058
SINGLE NATIONAL MAXIMUM RETAIL PRICE	-	-	-	-	2,261.000
BASIC FUEL PRICE - 27/09/2023	1,416.936	1,373.032	1,616.273	1,646.932	1,614.684
PRESS RELEASE CONTRIBUTION TO BFP 06/09/2023 - 27/09/2023	1,411.970	1,371.970	1,496.630	1,520.030	1,508.128
UNIT OVER/(UNDER) RECOVERY - 27/09/2023	(4.966)	(1.062)	(119.643)	(126.902)	(106.556)
AVERAGE BASIC FUEL PRICE 01/09/2023 - 27/09/2023	1,473.594	1,427.238	1,618.002	1,638.900	1,615.582
AVERAGE UNIT OVER/(UNDER) RECOVERY 01/09/2023 - 27/09/2023	(87.835)	(81.479)	(166.214)	(162.450)	(151.349)

ANALYSIS MOVEMENT OF AVERAGE OVER/(UNDER) RECOVERY

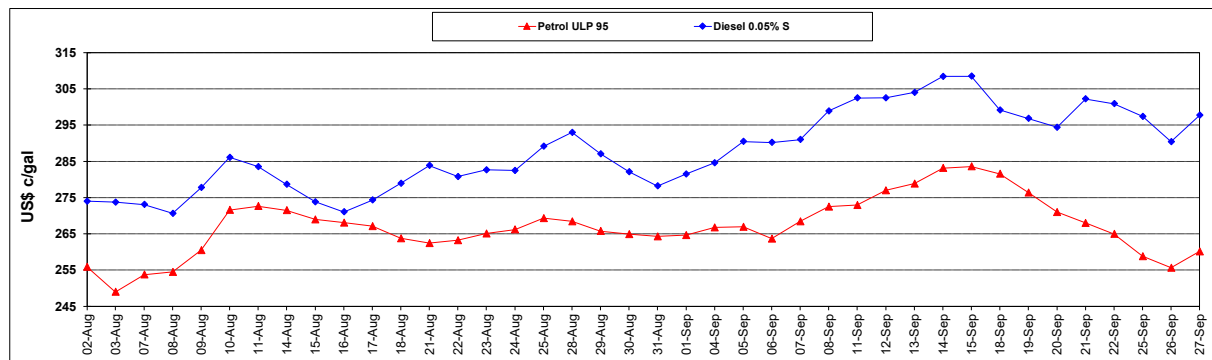
	PETROL 95	PETROL 93	DIESEL 0.05%	DIESEL 0.005%	ILL. PAR.
- MOVEMENT IN INTERNATIONAL PRODUCT PRICES	(64.573)	(58.949)	(140.672)	(136.577)	(125.846)
- MOVEMENT IN EXCHANGE RATE	(23.262)	(22.530)	(25.542)	(25.872)	(25.503)
AVERAGE UNIT OVER/(UNDER) RECOVERY 01/09/2023 - 27/09/2023	(87.835)	(81.479)	(166.214)	(162.450)	(151.349)

R/\$ EXCHANGE RATE - (R/\$19.0683 - 27/09/2023)

EXCHANGE RATE USED IN BASIC FUEL PRICE



INTERNATIONAL PRODUCT PRICES OF BASKET USED IN BASIC FUEL PRICE



BASIC FUEL PRICE IN SA CENTS PER LITRE

