

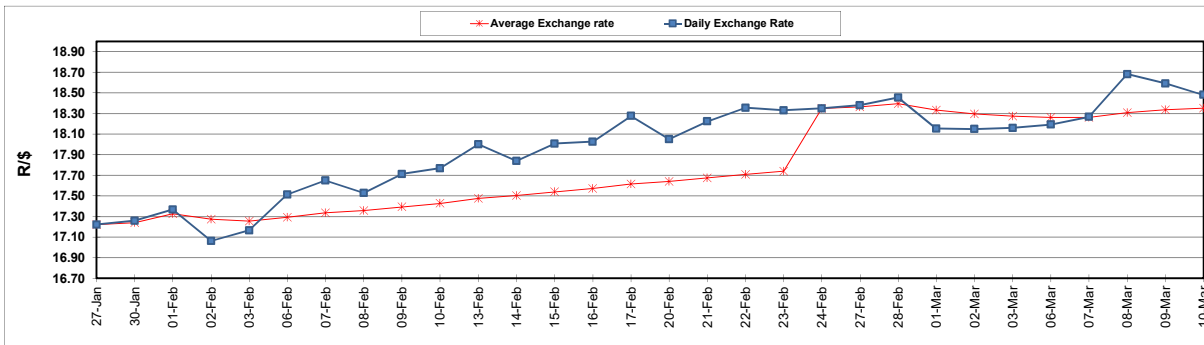
South African Cents per Litre (SA c/l)	PETROL 95 ULP	PETROL 93 ULP & LRP	DIESEL 0.05%	DIESEL 0.005%	ILL. PAR.
GAUTENG PUMP PRICE AS FROM 01/03/2023	2,295.000	2,265.000	-	-	-
WHOLESALE PRICE AS FROM 01/03/2023	-	-	2,162.410	2,171.810	1,596.958
SINGLE NATIONAL MAXIMUM RETAIL PRICE	-	-	-	-	2,104.000
BASIC FUEL PRICE - 10/03/2023	1,235.257	1,202.614	1,277.615	1,286.205	1,254.704
PRESS RELEASE CONTRIBUTION TO BFP 01/03/2023 - 10/03/2023	1,244.850	1,214.850	1,340.630	1,350.030	1,378.128
UNIT OVER/(UNDER) RECOVERY - 10/03/2023	9.593	12.236	63.015	63.825	123.424
AVERAGE BASIC FUEL PRICE 24/02/2023 - 10/03/2023	1,246.636	1,216.749	1,324.152	1,331.946	1,321.126
AVERAGE UNIT OVER/(UNDER) RECOVERY 24/02/2023 - 10/03/2023	(35.227)	(35.341)	9.387	10.720	53.456

ANALYSIS MOVEMENT OF AVERAGE OVER/(UNDER) RECOVERY

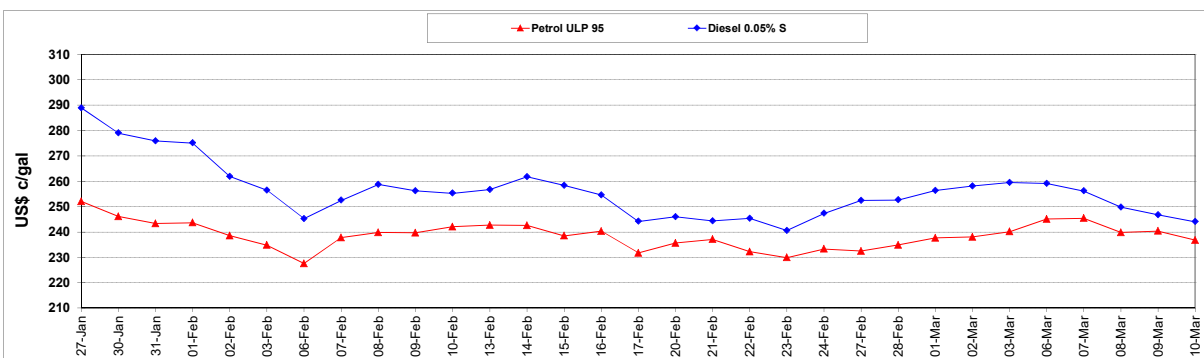
	PETROL 95	PETROL 93	DIESEL 0.05%	DIESEL 0.005%	ILL. PAR.
- MOVEMENT IN INTERNATIONAL PRODUCT PRICES	6.206	5.100	53.398	54.990	97.367
- MOVEMENT IN EXCHANGE RATE	(41.434)	(40.441)	(44.011)	(44.270)	(43.910)
AVERAGE UNIT OVER/(UNDER) RECOVERY 24/02/2023 - 10/03/2023	(35.227)	(35.341)	9.387	10.720	53.456

R/\$ EXCHANGE RATE - (R/\$18.4805 - 10/03/2023)

EXCHANGE RATE USED IN BASIC FUEL PRICE



INTERNATIONAL PRODUCT PRICES OF BASKET USED IN BASIC FUEL PRICE



BASIC FUEL PRICE IN SA CENTS PER LITRE

