

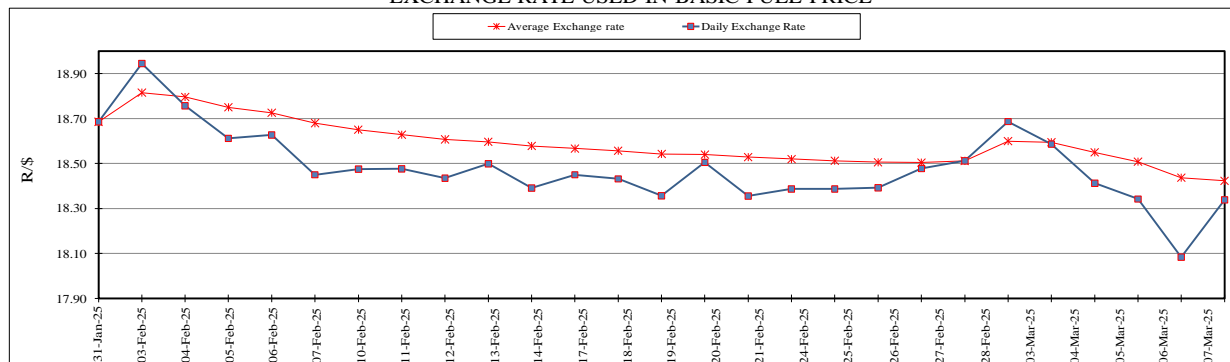
South African Cents per Litre (SA c/l)	PETROL 95 ULP	PETROL 93 ULP & LRP	DIESEL 0.05%	DIESEL 0.005%	ILL. PAR.
GAUTENG PUMP PRICE AS FROM 05/03/2025	2,234.000	2,209.000	-	-	-
WHOLESALE PRICE AS FROM 05/03/2025	-	-	2,016.050	2,020.450	1,417.318
SINGLE NATIONAL MAXIMUM RETAIL PRICE AS FROM 05/03/2025	-	-	-	-	1,809.000
BASIC FUEL PRICE - 10/03/2025	986.671	977.071	1,078.147	1,083.318	1,057.957
PRESS RELEASE CONTRIBUTION TO BFP 05/03/2025 - 10/03/2025	1,102.870	1,077.870	1,174.630	1,179.030	1,155.128
UNIT OVER/(UNDER) RECOVERY - 10/03/2025	116.199	100.799	96.483	95.712	97.171
AVERAGE BASIC FUEL PRICE 28/02/2025 - 10/03/2025	1,011.289	999.174	1,098.803	1,104.152	1,079.004
AVERAGE UNIT OVER/(UNDER) RECOVERY 28/02/2025 - 10/03/2025	94.581	81.696	83.113	84.735	78.695

ANALYSIS MOVEMENT OF AVERAGE OVER/(UNDER) RECOVERY

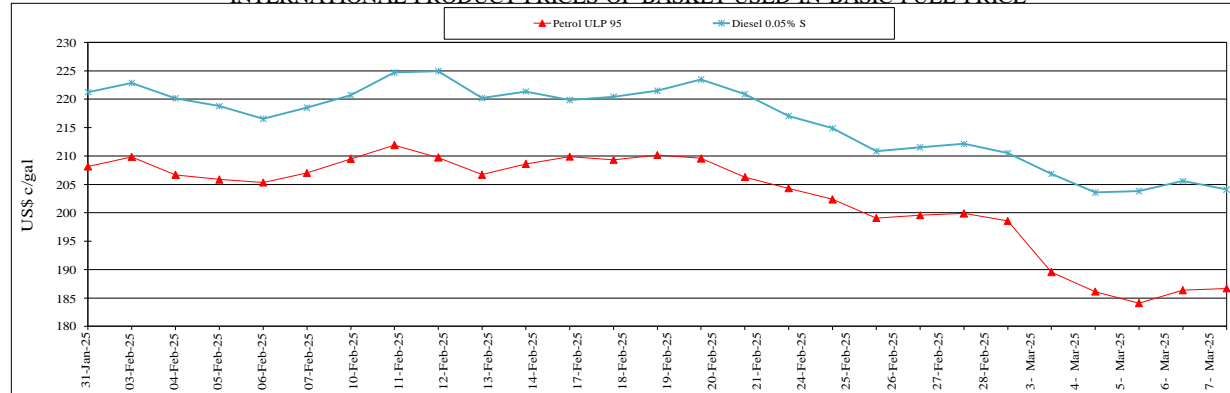
	PETROL 95	PETROL 93	DIESEL 0.05%	DIESEL 0.005%	ILL. PAR.
- MOVEMENT IN INTERNATIONAL PRODUCT PRICES	90.091	77.260	78.234	79.832	73.904
- MOVEMENT IN EXCHANGE RATE	4.490	4.436	4.879	4.903	4.791
AVERAGE UNIT OVER/(UNDER) RECOVERY 28/02/2025 -10/03/2025	94.581	81.696	83.113	84.735	78.695

R/\$ EXCHANGE RATE - (R/\$18.3385 - 10/03/2025)

EXCHANGE RATE USED IN BASIC FUEL PRICE



INTERNATIONAL PRODUCT PRICES OF BASKET USED IN BASIC FUEL PRICE



BASIC FUEL PRICE IN SA CENTS PER LITRE

