

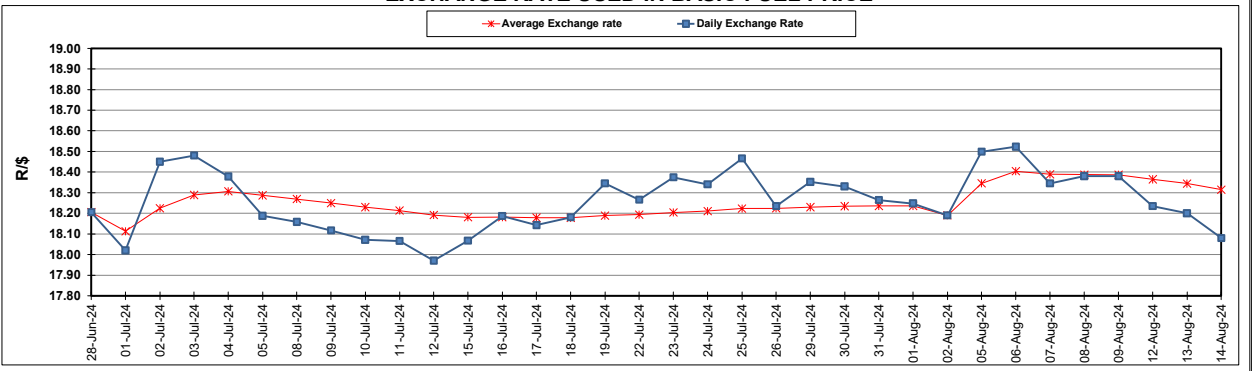
South African Cents per Litre (SA c/l)	PETROL 95 ULP	PETROL 93 ULP & LRP	DIESEL 0.05%	DIESEL 0.005%	ILL. PAR.
GAUTENG PUMP PRICE AS FROM 07/08/2024	2,311.000	2,271.000	-	-	-
WHOLESALE PRICE AS FROM 07/08/2024	-	-	2,038.170	2,073.570	1,479.938
SINGLE NATIONAL MAXIMUM RETAIL PRICE AS FROM 07/08/2024	-	-	-	-	1,894.000
BASIC FUEL PRICE - 14/08/2024	1,128.354	1,094.184	1,165.278	1,169.301	1,155.064
PRESS RELEASE CONTRIBUTION TO BFP 07/08/2024 - 14/08/2024	1,200.570	1,160.570	1,204.630	1,240.030	1,226.128
UNIT OVER/(UNDER) RECOVERY - 14/08/2024	72.216	66.386	39.352	70.729	71.064
AVERAGE BASIC FUEL PRICE 02/08/2024 - 14/08/2024	1,138.830	1,103.661	1,160.818	1,168.330	1,155.534
AVERAGE UNIT OVER/(UNDER) RECOVERY 02/08/2024 - 14/08/2024	66.741	61.910	53.146	77.367	77.928

ANALYSIS MOVEMENT OF AVERAGE OVER/(UNDER) RECOVERY

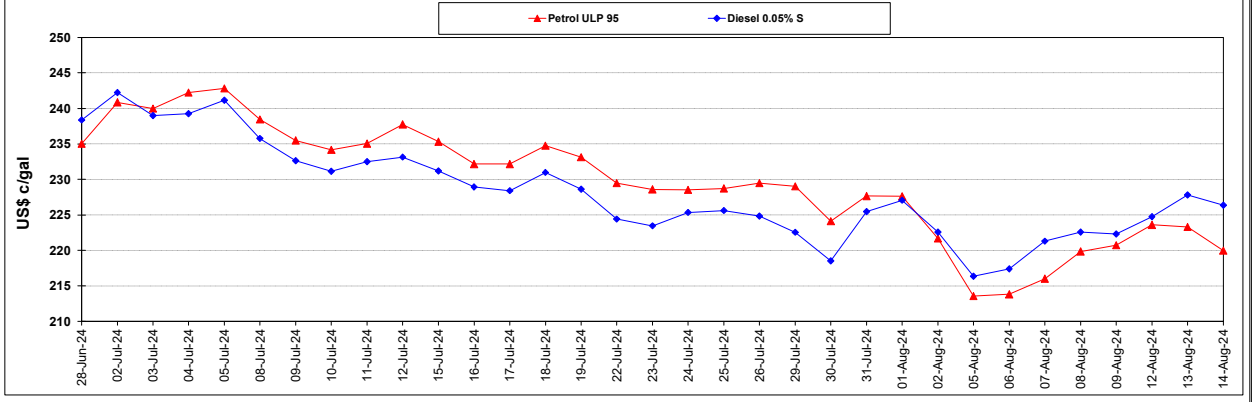
	PETROL 95	PETROL 93	DIESEL 0.05%	DIESEL 0.005%	ILL. PAR.
- MOVEMENT IN INTERNATIONAL PRODUCT PRICES	71.634	66.652	58.133	82.387	82.892
- MOVEMENT IN EXCHANGE RATE	(4.894)	(4.743)	(4.988)	(5.020)	(4.965)
AVERAGE UNIT OVER/(UNDER) RECOVERY 02/08/2024 - 14/08/2024	66.741	61.910	53.146	77.367	77.928

R/\$ EXCHANGE RATE - (R/\$18.0800 - 14/08/2024)

EXCHANGE RATE USED IN BASIC FUEL PRICE



INTERNATIONAL PRODUCT PRICES OF BASKET USED IN BASIC FUEL PRICE



BASIC FUEL PRICE IN SA CENTS PER LITRE

