

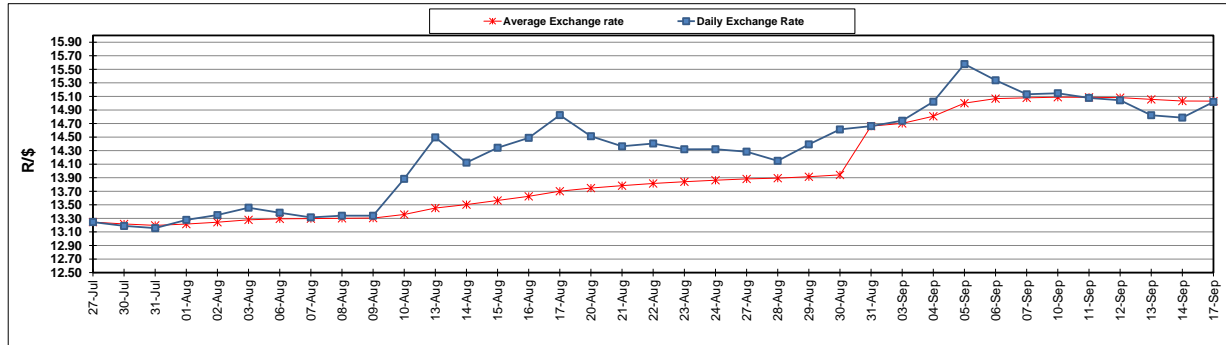
	PETROL 95 ULP	PETROL 93 ULP & LRP	DIESEL 0.05%	DIESEL 0.005%	ILL. PAR.
GAUTENG PUMP PRICE (SA c/l) AS FROM 05/09/2018	1 608.000	1 586.000	-	-	-
WHOLESALE PRICE (SA c/l) AS FROM 05/09/2018	-	-	1 440.830	1 445.230	953.088
SINGLE NATIONAL MAXIMUM RETAIL PRICE	-	-	-	-	1 233.000
BASIC FUEL PRICE - 17/09/2018 (SA c/l)	856.998	841.419	890.970	895.399	888.579
PRESS RELEASE CONTRIBUTION TO BFP 05/09/2018 - 17/09/2018 (SA c/l)	751.170	739.170	767.630	772.030	780.128
UNIT OVER/(UNDER) RECOVERY - 17/09/2018 (SA c/l)	(105.828)	(102.249)	(123.340)	(123.369)	(108.451)
AVERAGE BASIC FUEL PRICE 31/08/2018 - 17/09/2018	859.251	846.889	899.775	904.620	892.994
AVERAGE UNIT OVER/(UNDER) RECOVERY 31/08/2018 - 17/09/2018	(108.106)	(107.744)	(132.145)	(132.590)	(112.866)

ANALYSIS MOVEMENT OF AVERAGE OVER/(UNDER) RECOVERY

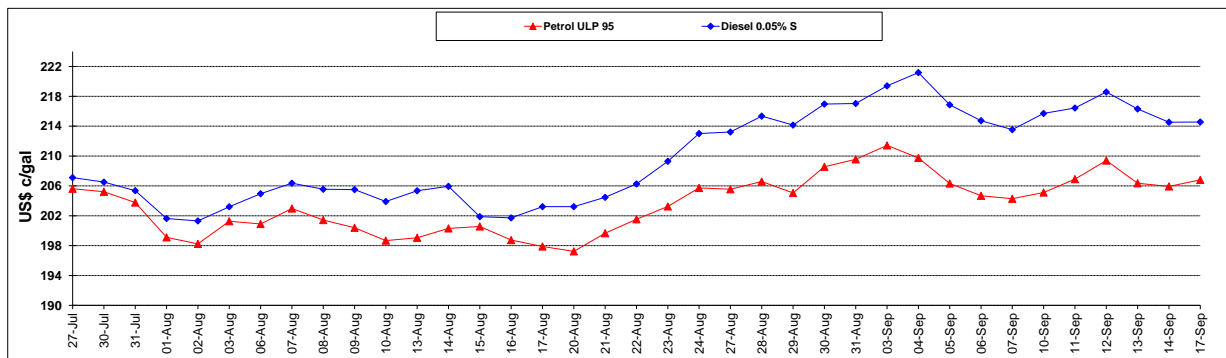
	PETROL 95	PETROL 93	DIESEL 0.05%	DIESEL 0.005%	ILL. PAR.
- MOVEMENT IN INTERNATIONAL PRODUCT PRICES	(45.921)	(46.453)	(67.027)	(67.121)	(48.239)
- MOVEMENT IN EXCHANGE RATE	(62.185)	(61.291)	(65.118)	(65.469)	(64.627)
AVERAGE UNIT OVER/(UNDER) RECOVERY 31/08/2018 - 17/09/2018	(108.106)	(107.744)	(132.145)	(132.590)	(112.866)

R/\$ EXCHANGE RATE - (R/\$15.0188 - 17/09/2018)

EXCHANGE RATE USED IN BASIC FUEL PRICE



INTERNATIONAL PRODUCT PRICES OF BASKET USED IN BASIC FUEL PRICE



BASIC FUEL PRICE IN SA CENTS PER LITRE

