

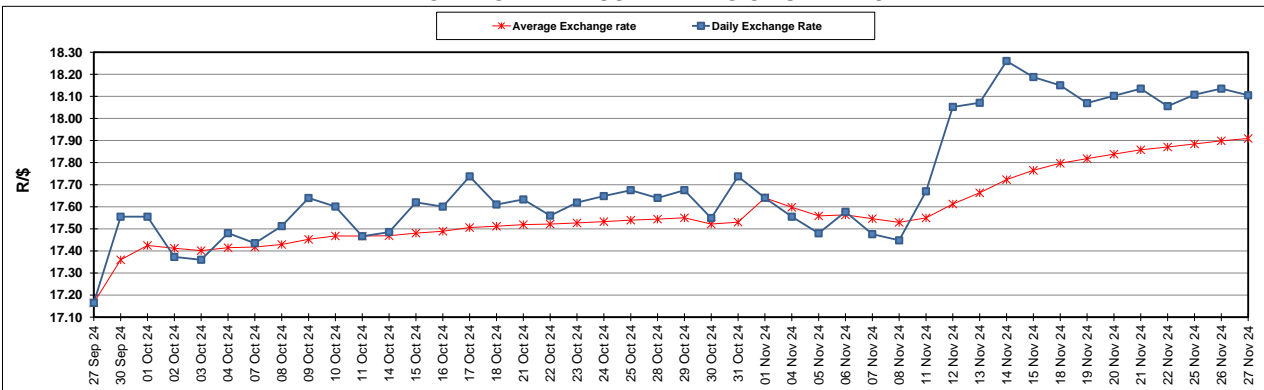
South African Cents per Litre (SA c/l)	PETROL 95 ULP	PETROL 93 ULP & LRP	DIESEL 0.05%	DIESEL 0.005%	ILL. PAR.
GAUTENG PUMP PRICE AS FROM 06/11/2024	2,130.000	2,098.000	-	-	-
WHOLESALE PRICE AS FROM 06/11/2024	-	-	1,866.170	1,876.570	1,286.938
SINGLE NATIONAL MAXIMUM RETAIL PRICE AS FROM 06/11/2024	-	-	-	-	1,636.000
BASIC FUEL PRICE - 27/11/2024	1,011.990	977.876	1,069.719	1,084.947	1,051.844
PRESS RELEASE CONTRIBUTION TO BFP 06/11/2024 - 27/11/2024	1,014.070	982.070	1,032.630	1,043.030	1,033.128
UNIT OVER/(UNDER) RECOVERY - 27/11/2024	2.080	4.194	(37.089)	(41.917)	(18.716)
AVERAGE BASIC FUEL PRICE 01/11/2024 - 27/11/2024	1,013.280	970.808	1,076.413	1,087.956	1,071.276
AVERAGE UNIT OVER/(UNDER) RECOVERY 01/11/2024 - 27/11/2024	(3.158)	7.315	(47.099)	(48.083)	(41.464)

### ANALYSIS MOVEMENT OF AVERAGE OVER/(UNDER) RECOVERY

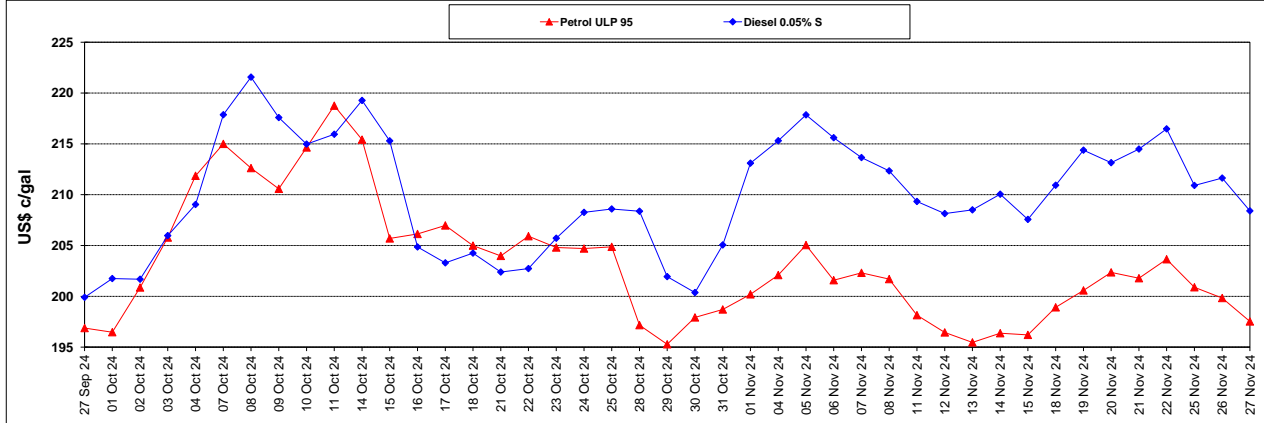
	PETROL 95	PETROL 93	DIESEL 0.05%	DIESEL 0.005%	ILL. PAR.
- MOVEMENT IN INTERNATIONAL PRODUCT PRICES	18.298	27.870	(24.308)	(25.048)	(18.781)
- MOVEMENT IN EXCHANGE RATE	(21.455)	(20.555)	(22.791)	(23.036)	(22.683)
AVERAGE UNIT OVER/(UNDER) RECOVERY 01/11/2024 - 27/11/2024	(3.158)	7.315	(47.099)	(48.083)	(41.464)

### R/\$ EXCHANGE RATE - (R/\$18.1050 - 27/11/2024)

### EXCHANGE RATE USED IN BASIC FUEL PRICE



### INTERNATIONAL PRODUCT PRICES OF BASKET USED IN BASIC FUEL PRICE



### BASIC FUEL PRICE IN SA CENTS PER LITRE

