

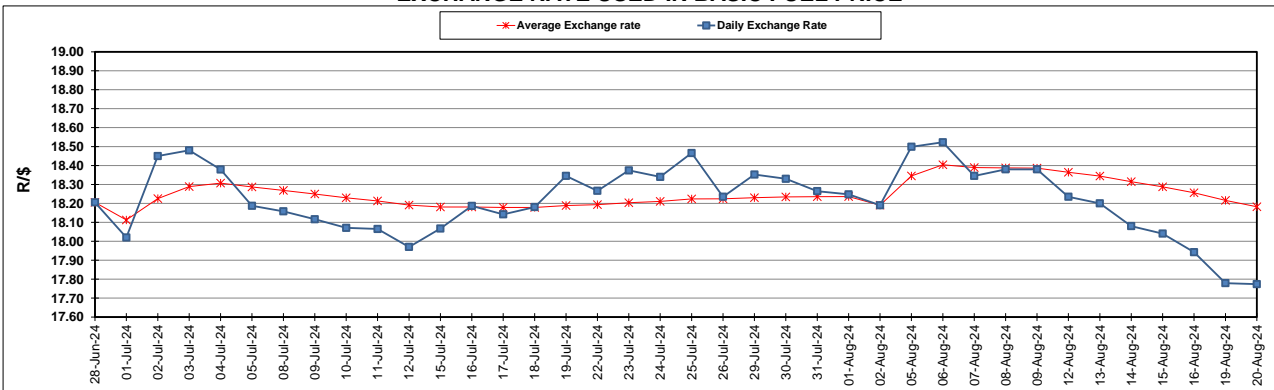
South African Cents per Litre (SA c/l)	PETROL 95 ULP	PETROL 93 ULP & LRP	DIESEL 0.05%	DIESEL 0.005%	ILL. PAR.
GAUTENG PUMP PRICE AS FROM 07/08/2024	2,311.000	2,271.000	-	-	-
WHOLESALE PRICE AS FROM 07/08/2024	-	-	2,038.170	2,073.570	1,479.938
SINGLE NATIONAL MAXIMUM RETAIL PRICE AS FROM 07/08/2024	-	-	-	-	1,894.000
BASIC FUEL PRICE - 20/08/2024	1,063.978	1,032.794	1,079.696	1,085.986	1,074.634
PRESS RELEASE CONTRIBUTION TO BFP 07/08/2024 - 20/08/2024	1,200.570	1,160.570	1,204.630	1,240.030	1,226.128
UNIT OVER/(UNDER) RECOVERY - 20/08/2024	136.592	127.776	124.934	154.044	151.494
AVERAGE BASIC FUEL PRICE 02/08/2024 - 20/08/2024	1,125.629	1,091.241	1,149.195	1,156.037	1,142.810
AVERAGE UNIT OVER/(UNDER) RECOVERY 02/08/2024 - 20/08/2024	78.403	72.791	61.898	87.916	88.396

ANALYSIS MOVEMENT OF AVERAGE OVER/(UNDER) RECOVERY

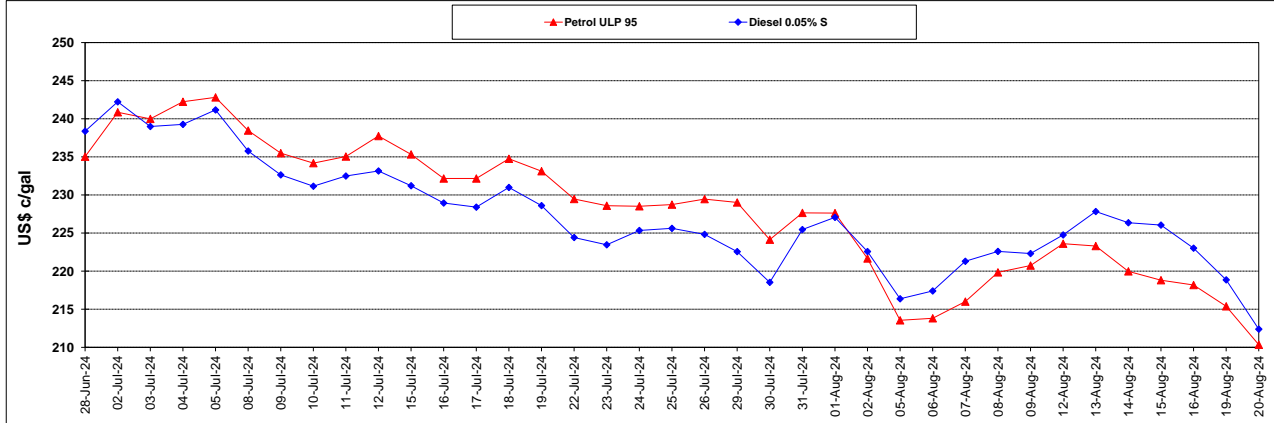
	PETROL 95	PETROL 93	DIESEL 0.05%	DIESEL 0.005%	ILL. PAR.
- MOVEMENT IN INTERNATIONAL PRODUCT PRICES	75.066	69.556	58.490	84.489	85.007
- MOVEMENT IN EXCHANGE RATE	3.337	3.235	3.407	3.427	3.388
AVERAGE UNIT OVER/(UNDER) RECOVERY 02/08/2024 - 20/08/2024	78.403	72.791	61.898	87.916	88.396

R/\$ EXCHANGE RATE - (R/\$17.7738 - 20/08/2024)

EXCHANGE RATE USED IN BASIC FUEL PRICE



INTERNATIONAL PRODUCT PRICES OF BASKET USED IN BASIC FUEL PRICE



BASIC FUEL PRICE IN SA CENTS PER LITRE

