

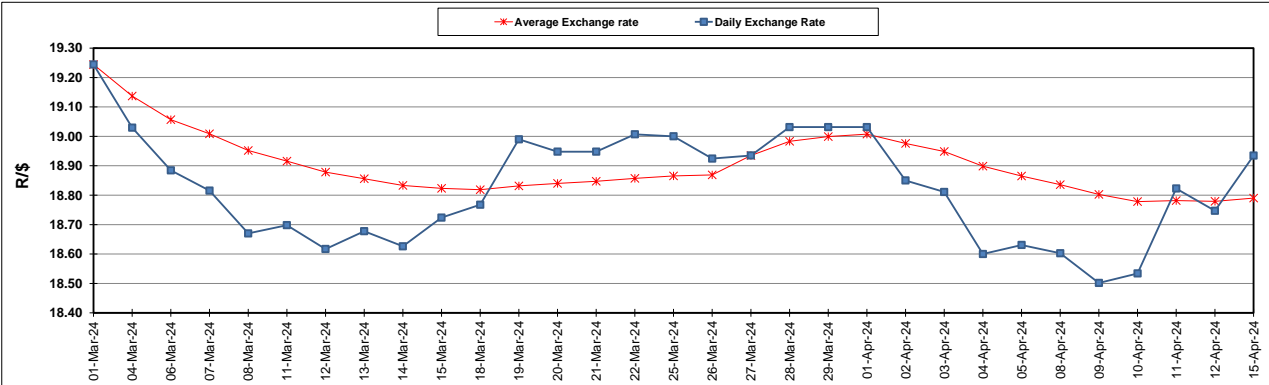
South African Cents per Litre (SA c/l)	PETROL 95 ULP	PETROL 93 ULP & LRP	DIESEL 0.05%	DIESEL 0.005%	ILL. PAR.
GAUTENG PUMP PRICE AS FROM 03/04/2024	2,512.000	2,478.000	-	-	-
WHOLESALE PRICE AS FROM 03/04/2024	-	-	2,245.090	2,259.490	1,618.938
SINGLE NATIONAL MAXIMUM RETAIL PRICE AS FROM 03/04/2024	-	-	-	-	2,079.000
BASIC FUEL PRICE - 15/04/2024	1,419.794	1,384.582	1,378.507	1,384.386	1,366.473
PRESS RELEASE CONTRIBUTION TO BFP 03/04/2024 - 15/04/2024	1,379.650	1,345.650	1,389.630	1,404.030	1,365.128
UNIT OVER/(UNDER) RECOVERY - 15/04/2024	(40.144)	(38.932)	11.123	19.644	(1.345)
AVERAGE BASIC FUEL PRICE 27/03/2024 - 15/04/2024	1,398.048	1,363.487	1,374.756	1,386.017	1,360.386
AVERAGE UNIT OVER/(UNDER) RECOVERY 27/03/2024 - 15/04/2024	(31.534)	(30.258)	25.231	30.156	17.599

ANALYSIS MOVEMENT OF AVERAGE OVER/(UNDER) RECOVERY

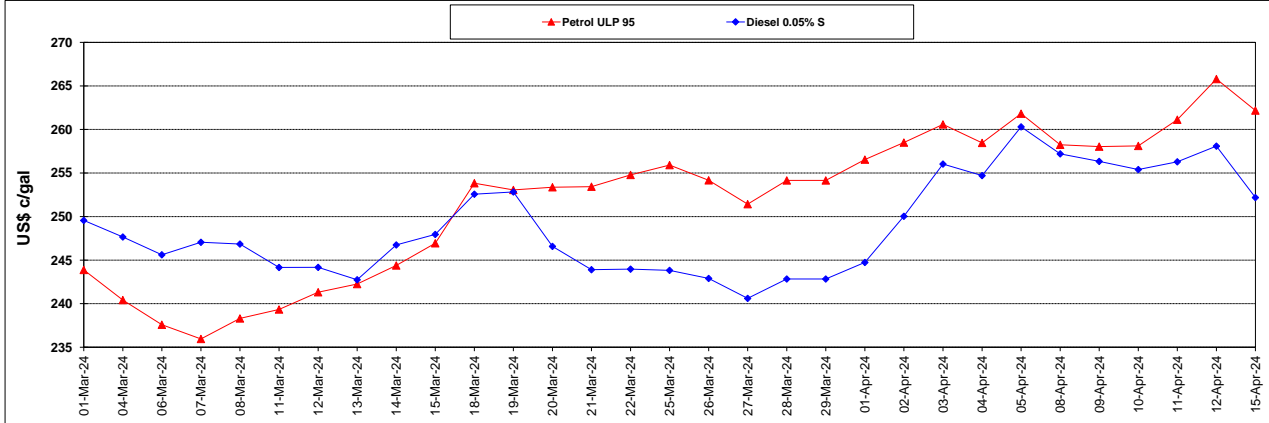
	PETROL 95	PETROL 93	DIESEL 0.05%	DIESEL 0.005%	ILL. PAR.
- MOVEMENT IN INTERNATIONAL PRODUCT PRICES	(37.390)	(35.969)	19.473	24.351	11.901
- MOVEMENT IN EXCHANGE RATE	5.856	5.711	5.758	5.805	5.698
AVERAGE UNIT OVER/(UNDER) RECOVERY 27/03/2024 - 15/04/2024	(31.534)	(30.258)	25.231	30.156	17.599

R/\$ EXCHANGE RATE - (R/\$18.9345 - 15/04/2024)

EXCHANGE RATE USED IN BASIC FUEL PRICE



INTERNATIONAL PRODUCT PRICES OF BASKET USED IN BASIC FUEL PRICE



BASIC FUEL PRICE IN SA CENTS PER LITRE

