

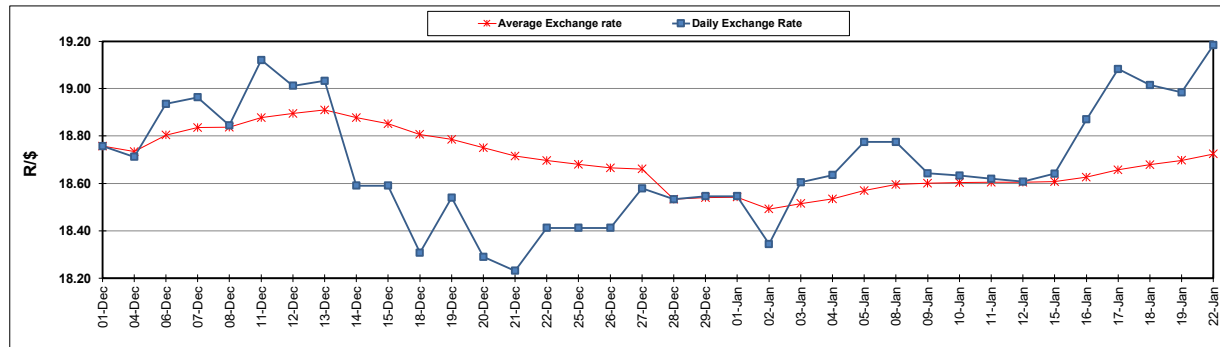
South African Cents per Litre (SA c/l)	PETROL 95 ULP	PETROL 93 ULP & LRP	DIESEL 0.05%	DIESEL 0.005%	ILL. PAR.
GAUTENG PUMP PRICE AS FROM 03/01/2024	2,249.000	2,217.000	-	-	-
WHOLESALE PRICE AS FROM 03/01/2024	-	-	2,063.170	2,072.570	1,530.938
SINGLE NATIONAL MAXIMUM RETAIL PRICE	-	-	-	-	1,981.000
BASIC FUEL PRICE - 22/01/2024	1,293.415	1,250.932	1,374.061	1,382.188	1,407.218
PRESS RELEASE CONTRIBUTION TO BFP 03/01/2024 - 22/01/2024	1,146.870	1,114.870	1,240.630	1,250.030	1,284.128
UNIT OVER/(UNDER) RECOVERY - 22/01/2024	(146.545)	(136.062)	(133.431)	(132.158)	(123.090)
AVERAGE BASIC FUEL PRICE 28/12/2023 - 22/01/2024	1,194.720	1,159.124	1,299.956	1,306.169	1,333.888
AVERAGE UNIT OVER/(UNDER) RECOVERY 28/12/2023 - 22/01/2024	(36.810)	(36.325)	(38.882)	(33.917)	(29.093)

ANALYSIS MOVEMENT OF AVERAGE OVER/(UNDER) RECOVERY

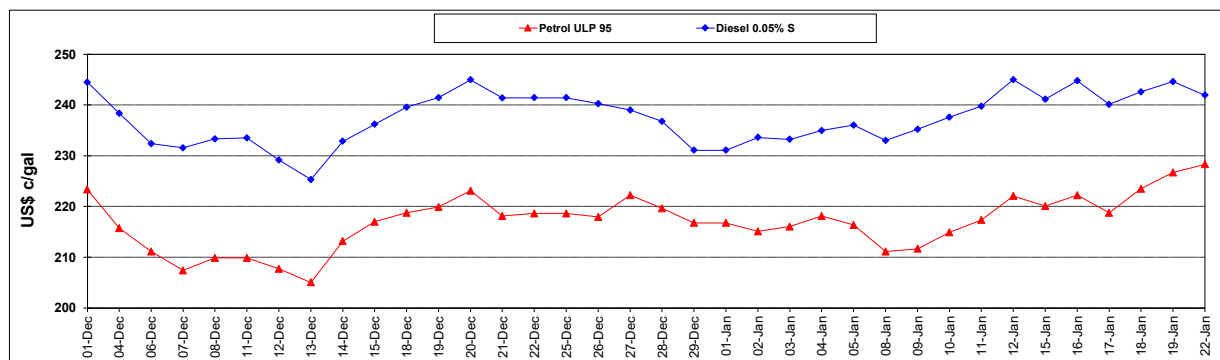
	PETROL 95	PETROL 93	DIESEL 0.05%	DIESEL 0.005%	ILL. PAR.
- MOVEMENT IN INTERNATIONAL PRODUCT PRICES	(32.758)	(32.394)	(34.473)	(29.487)	(24.569)
- MOVEMENT IN EXCHANGE RATE	(4.052)	(3.931)	(4.409)	(4.430)	(4.524)
AVERAGE UNIT OVER/(UNDER) RECOVERY 28/12/2023 - 22/01/2024	(36.810)	(36.325)	(38.882)	(33.917)	(29.093)

R/\$ EXCHANGE RATE - (R/\$19.1835 - 22/01/2024)

EXCHANGE RATE USED IN BASIC FUEL PRICE



INTERNATIONAL PRODUCT PRICES OF BASKET USED IN BASIC FUEL PRICE



BASIC FUEL PRICE IN SA CENTS PER LITRE

