

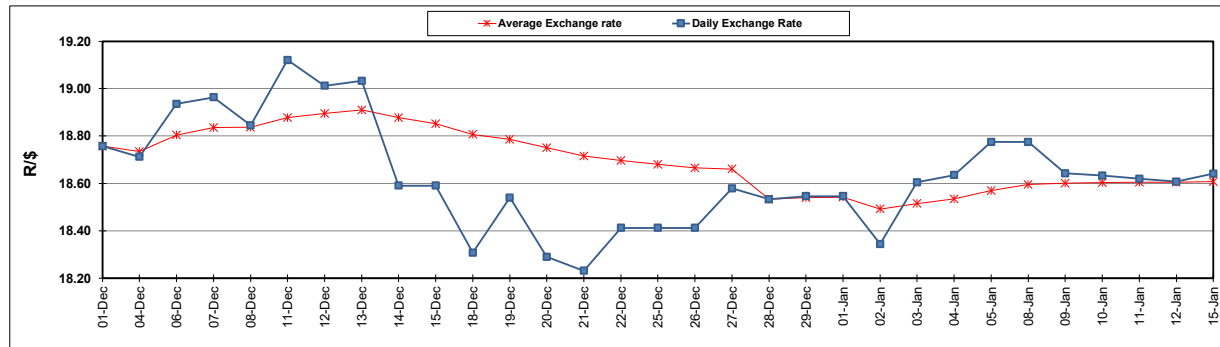
South African Cents per Litre (SA c/l)	PETROL 95 ULP	PETROL 93 ULP & LRP	DIESEL 0.05%	DIESEL 0.005%	ILL. PAR.
GAUTENG PUMP PRICE AS FROM 03/01/2024	2,249.000	2,217.000	-	-	-
WHOLESALE PRICE AS FROM 03/01/2024	-	-	2,063.170	2,072.570	1,530.938
SINGLE NATIONAL MAXIMUM RETAIL PRICE	-	-	-	-	1,981.000
BASIC FUEL PRICE - 15/01/2024	1,199.827	1,159.808	1,313.680	1,317.449	1,348.748
PRESS RELEASE CONTRIBUTION TO BFP 03/01/2024 - 15/01/2024	1,146.870	1,114.870	1,240.630	1,250.030	1,284.128
UNIT OVER/(UNDER) RECOVERY - 15/01/2024	(52.957)	(44.938)	(73.050)	(67.419)	(64.620)
AVERAGE BASIC FUEL PRICE 28/12/2023 - 15/01/2024	1,172.813	1,139.775	1,277.756	1,283.446	1,309.518
AVERAGE UNIT OVER/(UNDER) RECOVERY 28/12/2023 - 15/01/2024	(10.657)	(13.927)	(8.818)	(2.647)	3.225

ANALYSIS MOVEMENT OF AVERAGE OVER/(UNDER) RECOVERY

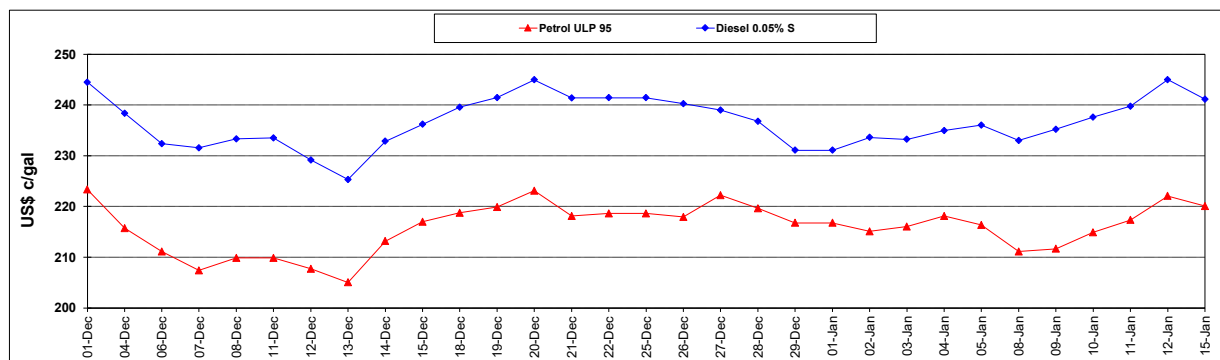
	PETROL 95	PETROL 93	DIESEL 0.05%	DIESEL 0.005%	ILL. PAR.
- MOVEMENT IN INTERNATIONAL PRODUCT PRICES	(13.991)	(17.167)	(12.451)	(6.296)	(0.498)
- MOVEMENT IN EXCHANGE RATE	3.334	3.240	3.633	3.649	3.723
AVERAGE UNIT OVER/(UNDER) RECOVERY 28/12/2023 - 15/01/2024	(10.657)	(13.927)	(8.818)	(2.647)	3.225

R/\$ EXCHANGE RATE - (R/\$18.6408 - 15/01/2024)

EXCHANGE RATE USED IN BASIC FUEL PRICE



INTERNATIONAL PRODUCT PRICES OF BASKET USED IN BASIC FUEL PRICE



BASIC FUEL PRICE IN SA CENTS PER LITRE

