

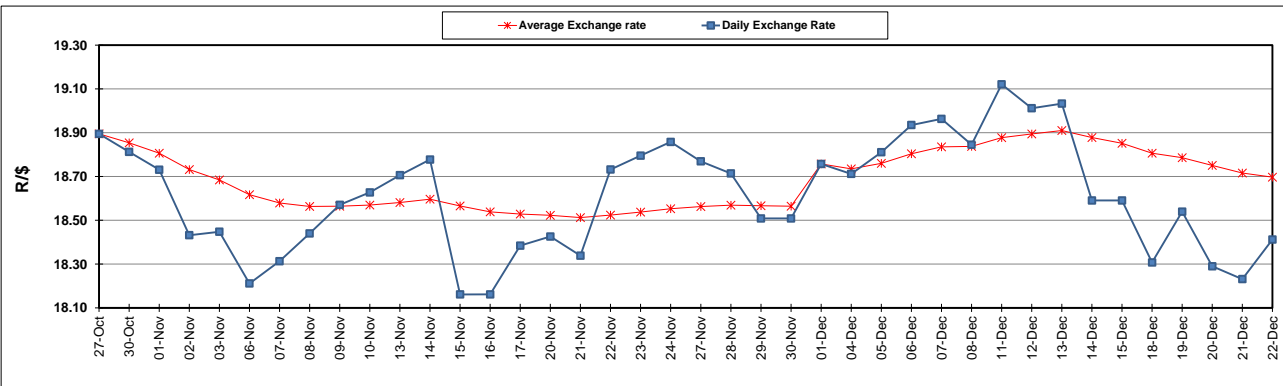
South African Cents per Litre (SA c/l)	PETROL 95 ULP	PETROL 93 ULP & LRP	DIESEL 0.05%	DIESEL 0.005%	ILL. PAR.
GAUTENG PUMP PRICE AS FROM 06/12/2023	2,325.000	2,279.000	-	-	-
WHOLESALE PRICE AS FROM 06/12/2023	-	-	2,181.490	2,198.890	1,623.938
SINGLE NATIONAL MAXIMUM RETAIL PRICE	-	-	-	-	2,105.000
BASIC FUEL PRICE - 22/12/2023	1,169.230	1,137.709	1,289.326	1,296.141	1,330.854
PRESS RELEASE CONTRIBUTION TO BFP 06/12/2023 - 22/12/2023	1,196.550	1,150.550	1,332.630	1,350.030	1,377.128
UNIT OVER/(UNDER) RECOVERY - 22/12/2023	27.320	12.841	43.304	53.889	46.274
AVERAGE BASIC FUEL PRICE 01/12/2023 - 22/12/2023	1,158.592	1,126.762	1,275.101	1,285.073	1,311.906
AVERAGE UNIT OVER/(UNDER) RECOVERY 01/12/2023 - 22/12/2023	56.483	42.313	99.342	107.895	99.910

ANALYSIS MOVEMENT OF AVERAGE OVER/(UNDER) RECOVERY

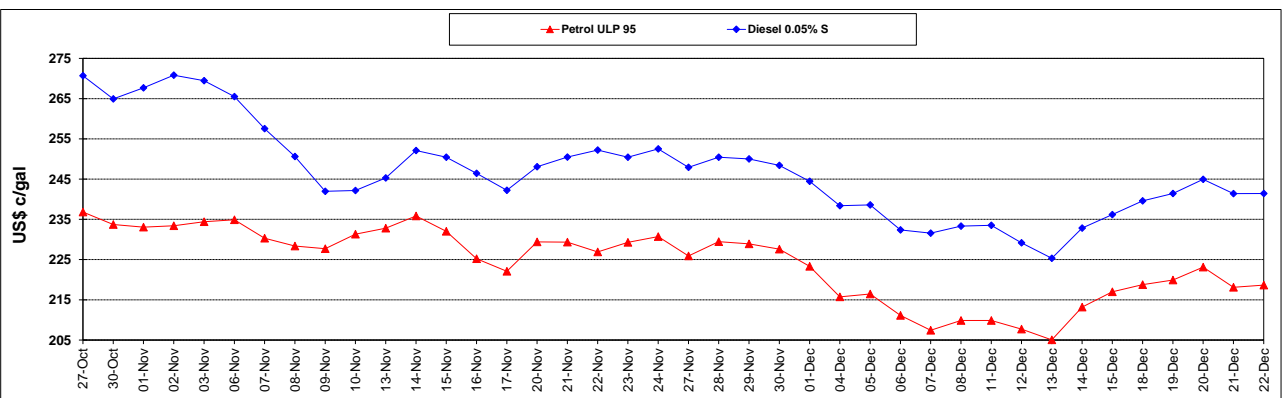
	PETROL 95	PETROL 93	DIESEL 0.05%	DIESEL 0.005%	ILL. PAR.
- MOVEMENT IN INTERNATIONAL PRODUCT PRICES	64.006	49.629	107.621	116.239	108.428
- MOVEMENT IN EXCHANGE RATE	(7.523)	(7.316)	(8.279)	(8.344)	(8.518)
AVERAGE UNIT OVER/(UNDER) RECOVERY 01/12/2023 - 22/12/2023	56.483	42.313	99.342	107.895	99.910

R/\$ EXCHANGE RATE - (R/\$18.4123 - 22/12/2023)

EXCHANGE RATE USED IN BASIC FUEL PRICE



INTERNATIONAL PRODUCT PRICES OF BASKET USED IN BASIC FUEL PRICE



BASIC FUEL PRICE IN SA CENTS PER LITRE

