

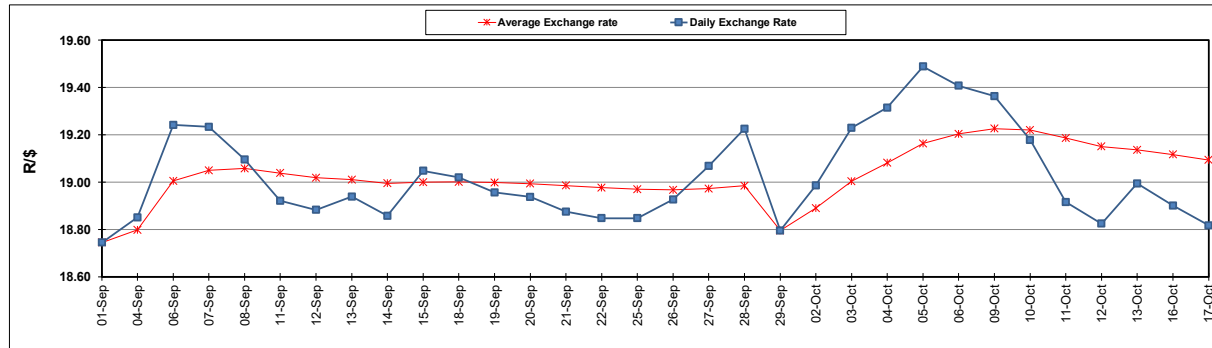
South African Cents per Litre (SA c/l)	PETROL 95 ULP	PETROL 93 ULP & LRP	DIESEL 0.05%	DIESEL 0.005%	ILL. PAR.
GAUTENG PUMP PRICE AS FROM 04/10/2023	2,568.000	2,522.000	-	-	-
WHOLESALE PRICE AS FROM 04/10/2023	-	-	2,501.990	2,522.390	1,892.058
SINGLE NATIONAL MAXIMUM RETAIL PRICE	-	-	-	-	2,463.000
BASIC FUEL PRICE - 17/10/2023	1,252.602	1,212.833	1,512.369	1,535.107	1,522.531
PRESS RELEASE CONTRIBUTION TO BFP 03/10/2023 - 17/10/2023	1,495.270	1,449.270	1,662.630	1,683.030	1,659.128
UNIT OVER/(UNDER) RECOVERY - 17/10/2023	242.668	236.437	150.261	147.923	136.597
AVERAGE BASIC FUEL PRICE 29/09/2023 - 17/10/2023	1,275.859	1,235.560	1,541.022	1,567.468	1,545.609
AVERAGE UNIT OVER/(UNDER) RECOVERY 29/09/2023 - 17/10/2023	200.188	195.872	83.300	77.946	78.673

### ANALYSIS MOVEMENT OF AVERAGE OVER/(UNDER) RECOVERY

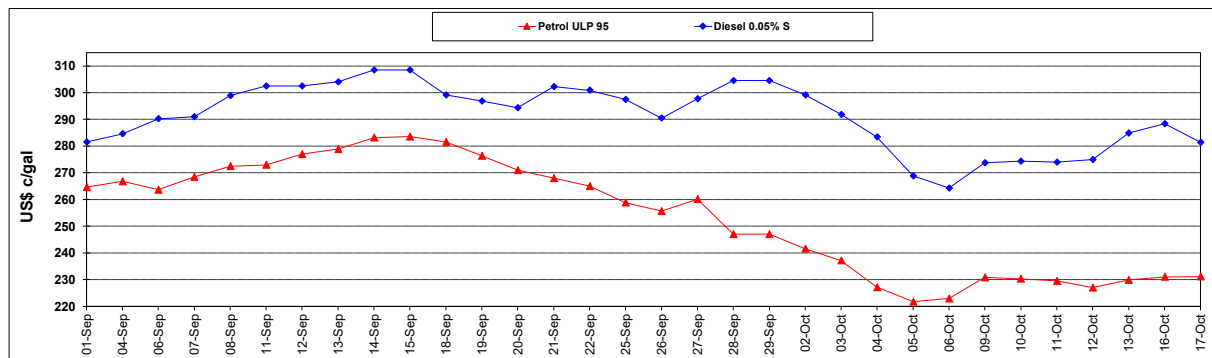
	PETROL 95	PETROL 93	DIESEL 0.05%	DIESEL 0.005%	ILL. PAR.
- MOVEMENT IN INTERNATIONAL PRODUCT PRICES	207.445	202.899	92.065	86.862	87.464
- MOVEMENT IN EXCHANGE RATE	(7.257)	(7.027)	(8.765)	(8.915)	(8.791)
AVERAGE UNIT OVER/(UNDER) RECOVERY 29/09/2023 - 17/10/2023	200.188	195.872	83.300	77.946	78.673

### R/\$ EXCHANGE RATE - (R/\$18.8170 - 17/10/2023)

#### EXCHANGE RATE USED IN BASIC FUEL PRICE



#### INTERNATIONAL PRODUCT PRICES OF BASKET USED IN BASIC FUEL PRICE



#### BASIC FUEL PRICE IN SA CENTS PER LITRE

