

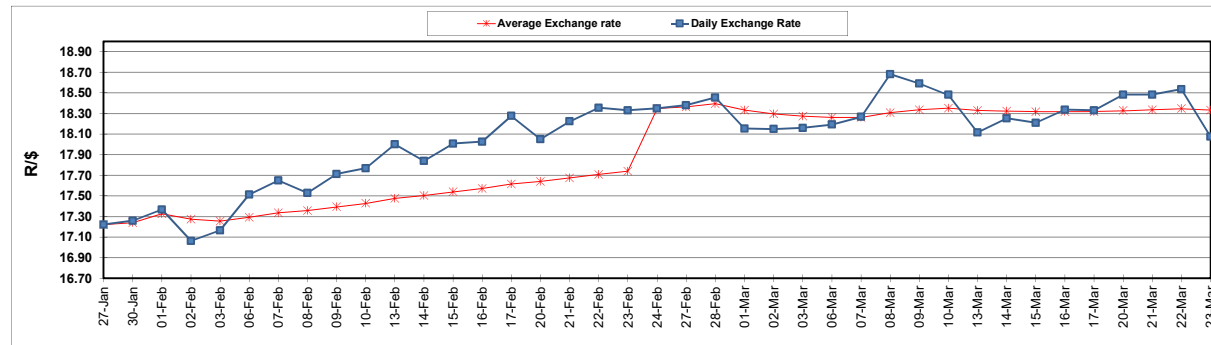
South African Cents per Litre (SA c/l)	PETROL 95 ULP	PETROL 93 ULP & LRP	DIESEL 0.05%	DIESEL 0.005%	ILL. PAR.
GAUTENG PUMP PRICE AS FROM 01/03/2123	2,295.000	2,265.000	-	-	-
WHOLESALE PRICE AS FROM 01/03/2123	-	-	2,162.410	2,171.810	1,596.958
SINGLE NATIONAL MAXIMUM RETAIL PRICE	-	-	-	-	2,104.000
BASIC FUEL PRICE - 23/03/2023	1,224.473	1,189.093	1,202.759	1,212.787	1,164.917
PRESS RELEASE CONTRIBUTION TO BFP 01/03/2023 - 23/03/2023	1,244.850	1,214.850	1,340.630	1,350.030	1,378.128
UNIT OVER/(UNDER) RECOVERY - 23/03/2023	20.377	25.757	137.871	137.243	213.211
AVERAGE BASIC FUEL PRICE 24/02/2023 - 23/03/2023	1,226.234	1,194.816	1,276.776	1,285.194	1,257.251
AVERAGE UNIT OVER/(UNDER) RECOVERY 24/02/2023 - 23/03/2023	0.223	1.641	59.954	60.786	118.928

ANALYSIS MOVEMENT OF AVERAGE OVER/(UNDER) RECOVERY

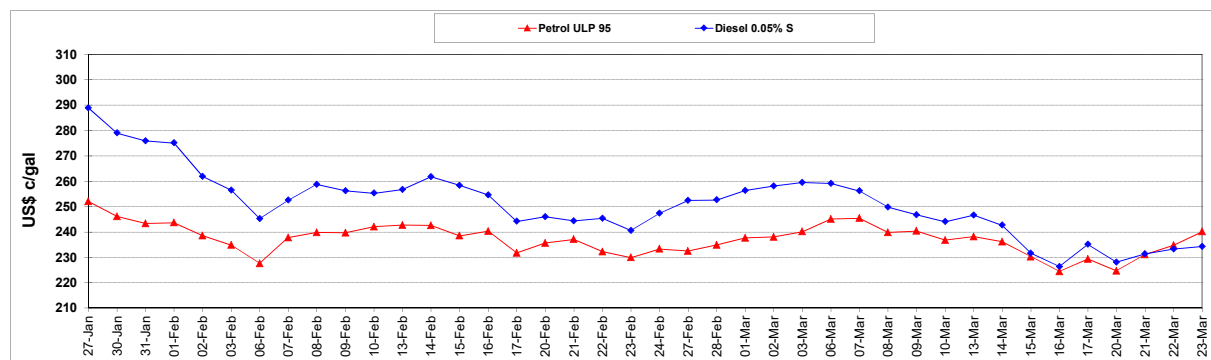
	PETROL 95	PETROL 93	DIESEL 0.05%	DIESEL 0.005%	ILL. PAR.
- MOVEMENT IN INTERNATIONAL PRODUCT PRICES	39.893	40.294	101.259	102.363	159.600
- MOVEMENT IN EXCHANGE RATE	(39.670)	(38.653)	(41.305)	(41.577)	(40.673)
AVERAGE UNIT OVER/(UNDER) RECOVERY 24/02/2023 - 23/03/2023	0.223	1.641	59.954	60.786	118.928

R/\$ EXCHANGE RATE - (R/\$18.0750 - 23/03/2023)

EXCHANGE RATE USED IN BASIC FUEL PRICE



INTERNATIONAL PRODUCT PRICES OF BASKET USED IN BASIC FUEL PRICE



BASIC FUEL PRICE IN SA CENTS PER LITRE

