

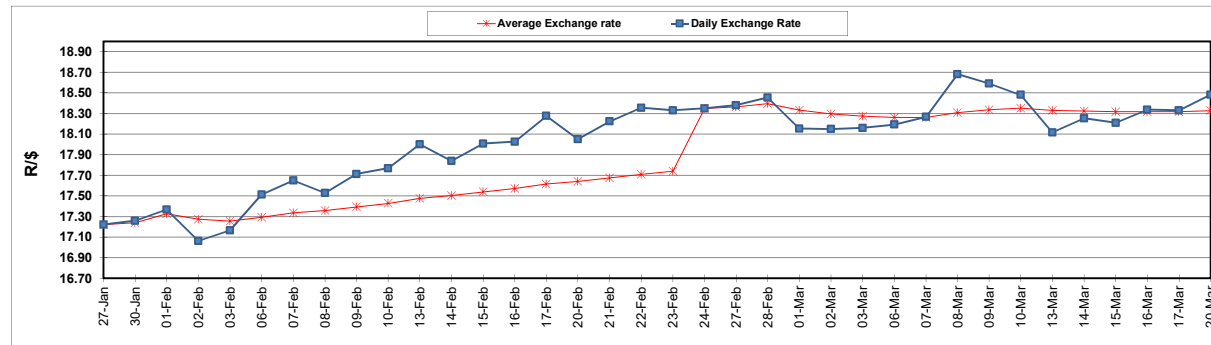
South African Cents per Litre (SA c/l)	PETROL 95 ULP	PETROL 93 ULP & LRP	DIESEL 0.05%	DIESEL 0.005%	ILL. PAR.
GAUTENG PUMP PRICE AS FROM 01/03/2123	2,295.000	2,265.000	-	-	-
WHOLESALE PRICE AS FROM 01/03/2123	-	-	2,162.410	2,171.810	1,596.958
SINGLE NATIONAL MAXIMUM RETAIL PRICE	-	-	-	-	2,104.000
BASIC FUEL PRICE - 20/03/2023	1,175.896	1,142.616	1,199.300	1,209.273	1,150.558
PRESS RELEASE CONTRIBUTION TO BFP 01/03/2023 - 20/03/2023	1,244.850	1,214.850	1,340.630	1,350.030	1,378.128
UNIT OVER/(UNDER) RECOVERY - 20/03/2023	68.954	72.234	141.330	140.757	227.570
AVERAGE BASIC FUEL PRICE 24/02/2023 - 20/03/2023	1,227.278	1,196.317	1,287.589	1,295.733	1,272.570
AVERAGE UNIT OVER/(UNDER) RECOVERY 24/02/2023 - 20/03/2023	(4.066)	(3.106)	48.453	49.533	103.264

### ANALYSIS MOVEMENT OF AVERAGE OVER/(UNDER) RECOVERY

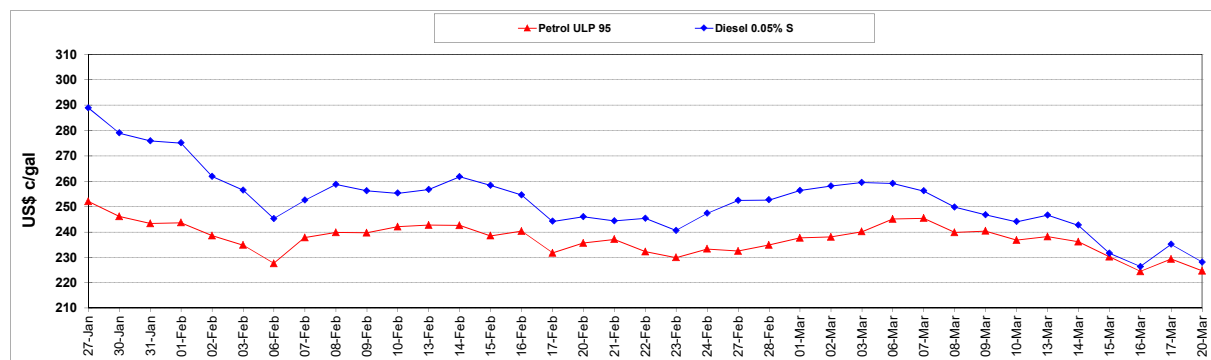
	PETROL 95	PETROL 93	DIESEL 0.05%	DIESEL 0.005%	ILL. PAR.
- MOVEMENT IN INTERNATIONAL PRODUCT PRICES	35.287	35.255	89.741	91.081	144.070
- MOVEMENT IN EXCHANGE RATE	(39.354)	(38.361)	(41.288)	(41.549)	(40.806)
AVERAGE UNIT OVER/(UNDER) RECOVERY 24/02/2023 - 20/03/2023	(4.066)	(3.106)	48.453	49.532	103.264

### R/\$ EXCHANGE RATE - (R/\$18.4815 - 20/03/2023)

#### EXCHANGE RATE USED IN BASIC FUEL PRICE



#### INTERNATIONAL PRODUCT PRICES OF BASKET USED IN BASIC FUEL PRICE



#### BASIC FUEL PRICE IN SA CENTS PER LITRE

