

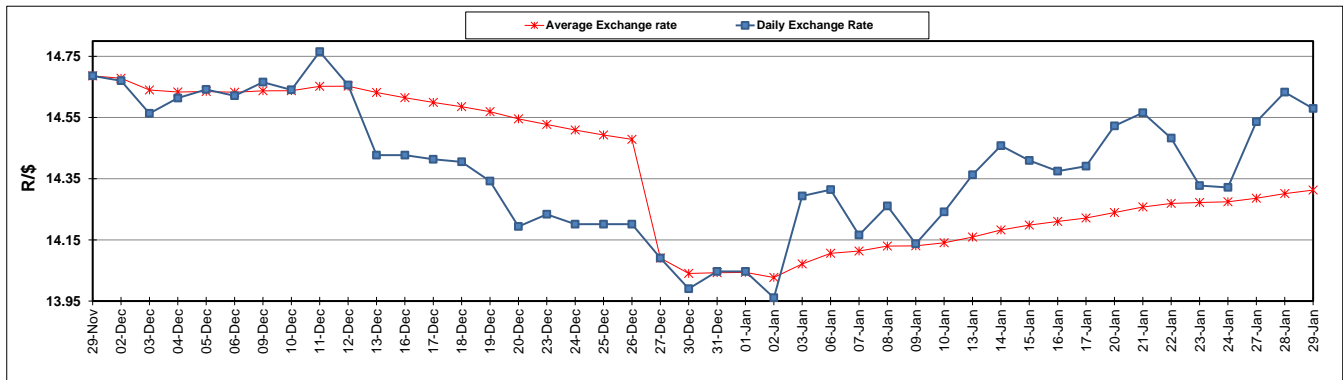
	PETROL 95 ULP	PETROL 93 ULP & LRP	DIESEL 0.05%	DIESEL 0.005%	ILL. PAR.
GAUTENG PUMP PRICE (SA c/l) AS FROM 01/01/2020	1,616.000	1,584.000	-	-	-
WHOLESALE PRICE (SA c/l) AS FROM 01/01/2020	-	-	1,462.260	1,467.660	927.728
SINGLE NATIONAL MAXIMUM RETAIL PRICE	-	-	-	-	1,180.000
BASIC FUEL PRICE - 29/01/2020 (SA c/l)	661.541	648.701	691.874	696.615	694.160
PRESS RELEASE CONTRIBUTION TO BFP 01/01/2020 - 29/01/2020 (SA c/l)	699.970	677.970	742.630	748.030	737.128
UNIT OVER/(UNDER) RECOVERY - 29/01/2020 (SA c/l)	38.429	29.269	50.756	51.415	42.968
AVERAGE BASIC FUEL PRICE 27/12/2019 - 29/01/2020	691.577	677.793	738.564	743.636	735.343
AVERAGE UNIT OVER/(UNDER) RECOVERY 27/12/2019 - 29/01/2020	10.843	1.377	2.941	3.269	1.160

ANALYSIS MOVEMENT OF AVERAGE OVER/(UNDER) RECOVERY

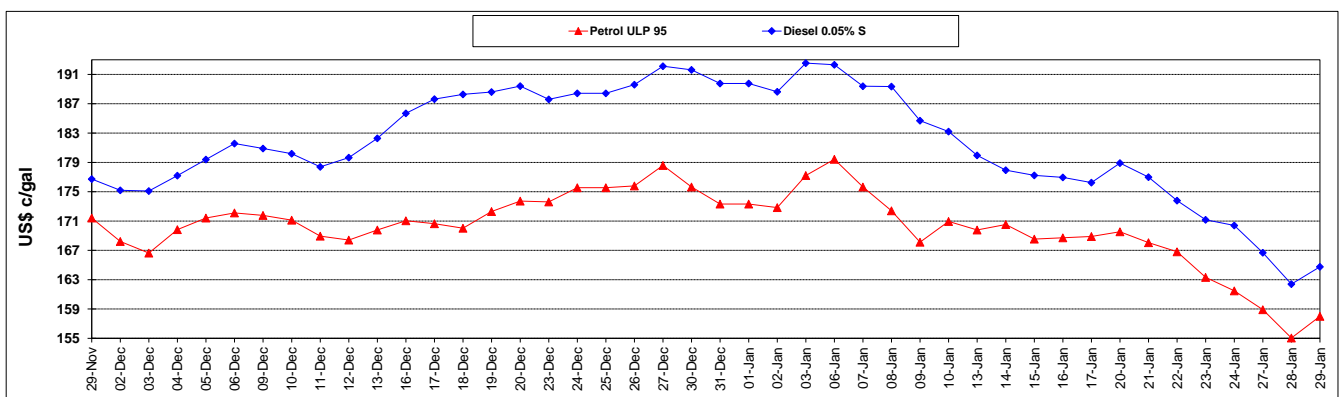
	PETROL 95	PETROL 93	DIESEL 0.05%	DIESEL 0.005%	ILL. PAR.
- MOVEMENT IN INTERNATIONAL PRODUCT PRICES	2.851	(6.456)	(5.594)	(5.324)	(7.338)
- MOVEMENT IN EXCHANGE RATE	7.992	7.833	8.535	8.593	8.498
AVERAGE UNIT OVER/(UNDER) RECOVERY 27/12/2019 - 29/01/2020	10.843	1.377	2.941	3.269	1.160

R/\$ EXCHANGE RATE - (R/\$14.5794 - 29/01/2020)

EXCHANGE RATE USED IN BASIC FUEL PRICE



INTERNATIONAL PRODUCT PRICES OF BASKET USED IN BASIC FUEL PRICE



BASIC FUEL PRICE IN SA CENTS PER LITRE

