

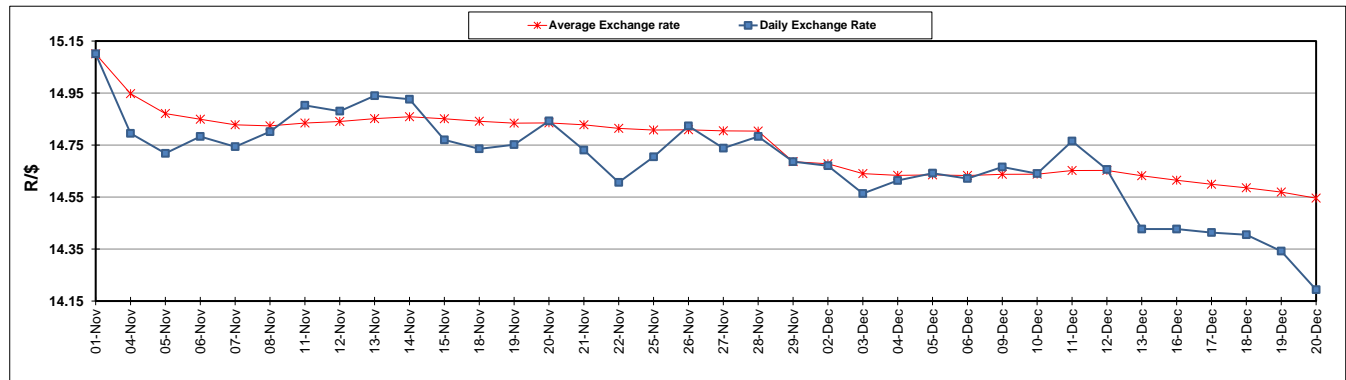
	PETROL 95 ULP	PETROL 93 ULP & LRP	DIESEL 0.05%	DIESEL 0.005%	ILL. PAR.
GAUTENG PUMP PRICE (SA c/l) AS FROM 04/12/2019	1,630.000	1,553.000	-	-	-
WHOLESALE PRICE (SA c/l) AS FROM 04/12/2019	-	-	1,453.260	1,458.660	922.728
SINGLE NATIONAL MAXIMUM RETAIL PRICE	-	-	-	-	1,173.000
BASIC FUEL PRICE - 20/12/2019 (SA c/l)	694.407	675.670	757.030	762.864	749.624
PRESS RELEASE CONTRIBUTION TO BFP 04/12/2019 - 20/12/2019 (SA c/l)	719.570	687.570	733.630	739.030	732.128
UNIT OVER/(UNDER) RECOVERY - 20/12/2019 (SA c/l)	25.163	11.900	(23.400)	(23.834)	(17.496)
AVERAGE BASIC FUEL PRICE 29/11/2019 - 20/12/2019	698.216	675.756	744.748	750.235	739.381
AVERAGE UNIT OVER/(UNDER) RECOVERY 29/11/2019 - 20/12/2019	19.404	9.864	(7.180)	(7.080)	(2.753)

ANALYSIS MOVEMENT OF AVERAGE OVER/(UNDER) RECOVERY

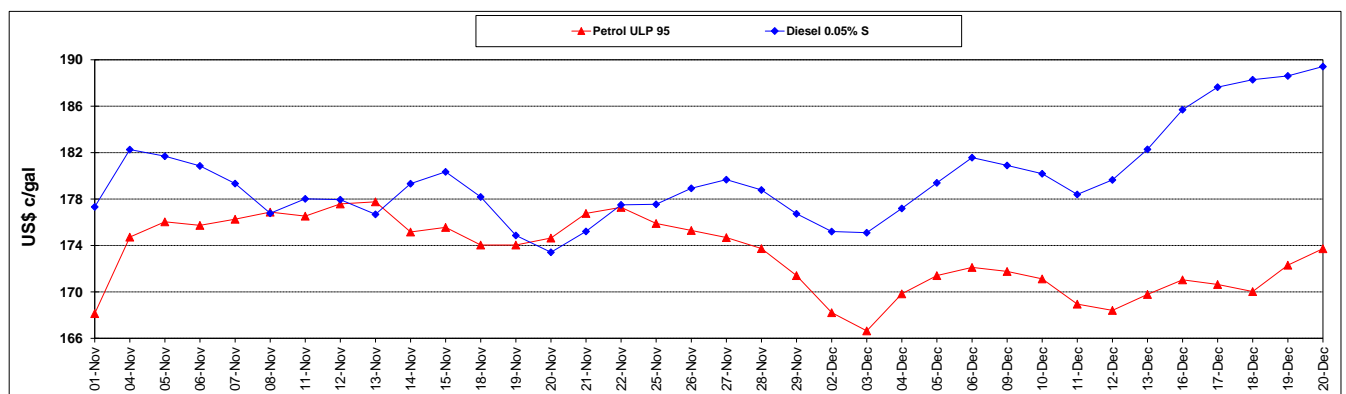
	PETROL 95	PETROL 93	DIESEL 0.05%	DIESEL 0.005%	ILL. PAR.
- MOVEMENT IN INTERNATIONAL PRODUCT PRICES	7.020	(2.122)	(20.390)	(20.387)	(15.868)
- MOVEMENT IN EXCHANGE RATE	12.384	11.986	13.210	13.307	13.115
AVERAGE UNIT OVER/(UNDER) RECOVERY 29/11/2019 - 20/12/2019	19.404	9.864	(7.180)	(7.080)	(2.753)

R/\$ EXCHANGE RATE - (R/\$14.1936 - 20/12/2019)

EXCHANGE RATE USED IN BASIC FUEL PRICE



INTERNATIONAL PRODUCT PRICES OF BASKET USED IN BASIC FUEL PRICE



BASIC FUEL PRICE IN SA CENTS PER LITRE

