

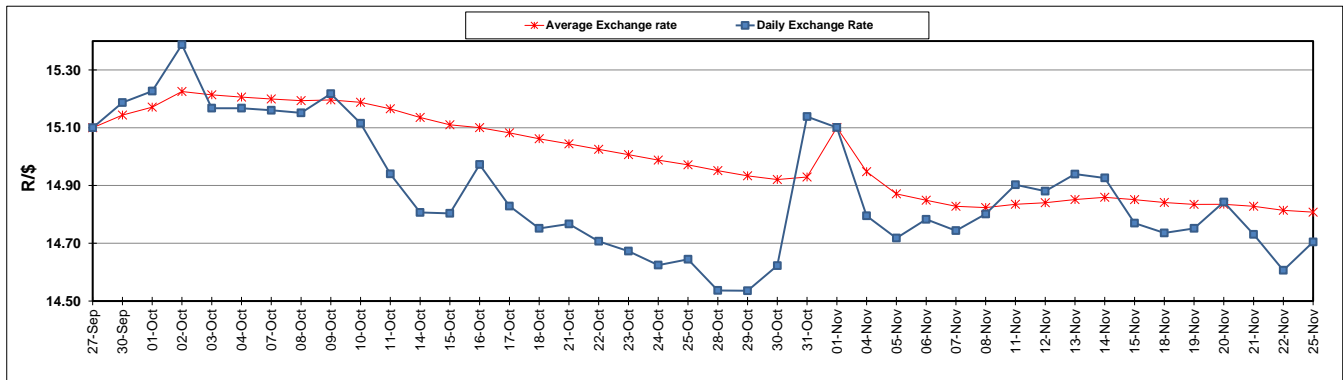
	PETROL 95 ULP	PETROL 93 ULP & LRP	DIESEL 0.05%	DIESEL 0.005%	ILL. PAR.
GAUTENG PUMP PRICE (SA c/l) AS FROM 06/11/2019	1,608.000	1,566.000	-	-	-
WHOLESALE PRICE (SA c/l) AS FROM 06/11/2019	-	-	1,468.210	1,474.610	938.678
SINGLE NATIONAL MAXIMUM RETAIL PRICE	-	-	-	-	1,197.000
BASIC FUEL PRICE - 25/11/2019 (SA c/l)	718.649	692.926	727.865	732.899	723.251
PRESS RELEASE CONTRIBUTION TO BFP 06/11/2019 - 25/11/2019 (SA c/l)	709.170	677.170	754.630	761.030	756.128
UNIT OVER/(UNDER) RECOVERY - 25/11/2019 (SA c/l)	(9.479)	(15.756)	26.765	28.131	32.877
AVERAGE BASIC FUEL PRICE 01/11/2019 - 25/11/2019	721.902	688.938	734.976	740.199	735.269
AVERAGE UNIT OVER/(UNDER) RECOVERY 01/11/2019 - 25/11/2019	(10.438)	(9.473)	22.477	23.301	24.918

ANALYSIS MOVEMENT OF AVERAGE OVER/(UNDER) RECOVERY

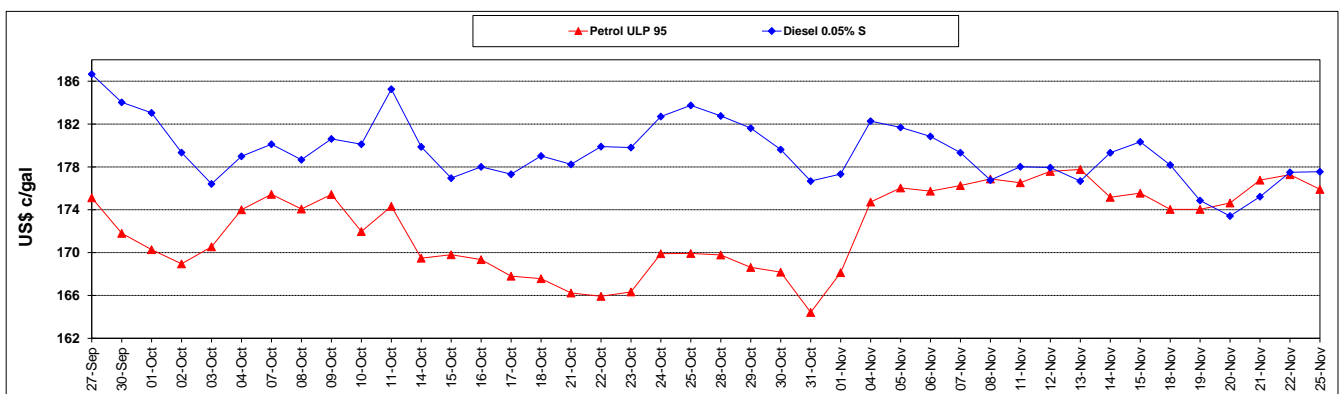
	PETROL 95	PETROL 93	DIESEL 0.05%	DIESEL 0.005%	ILL. PAR.
- MOVEMENT IN INTERNATIONAL PRODUCT PRICES	(16.366)	(15.132)	16.442	17.224	18.880
- MOVEMENT IN EXCHANGE RATE	5.928	5.658	6.036	6.078	6.038
AVERAGE UNIT OVER/(UNDER) RECOVERY 01/11/2019 - 25/11/2019	(10.438)	(9.473)	22.477	23.301	24.918

R/\$ EXCHANGE RATE - (R/\$14.7046 - 25/11/2019)

EXCHANGE RATE USED IN BASIC FUEL PRICE



INTERNATIONAL PRODUCT PRICES OF BASKET USED IN BASIC FUEL PRICE



BASIC FUEL PRICE IN SA CENTS PER LITRE

