

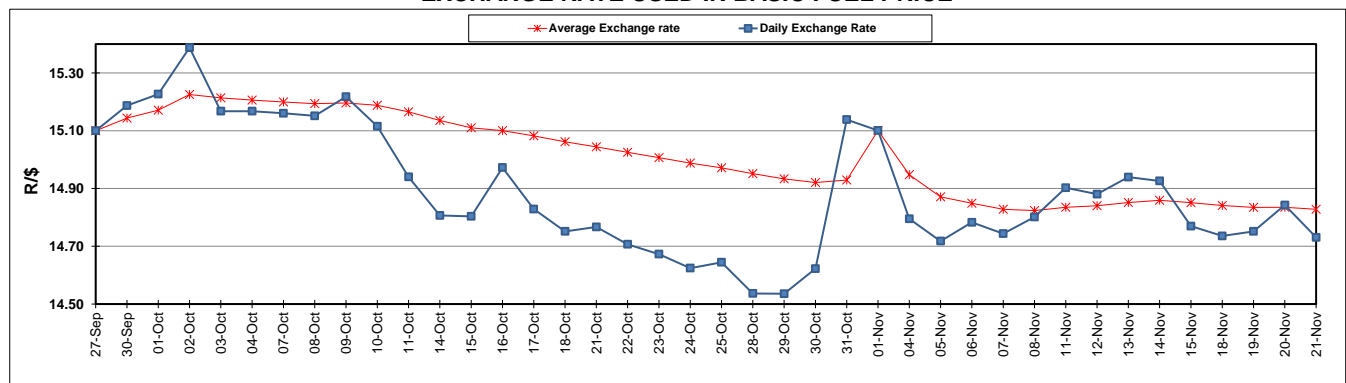
	PETROL 95 ULP	PETROL 93 ULP & LRP	DIESEL 0.05%	DIESEL 0.005%	ILL. PAR.
GAUTENG PUMP PRICE (SA c/l) AS FROM 06/11/2019	1,608.000	1,566.000	-	-	-
WHOLESALE PRICE (SA c/l) AS FROM 06/11/2019	-	-	1,468.210	1,474.610	938.678
SINGLE NATIONAL MAXIMUM RETAIL PRICE	-	-	-	-	1,197.000
BASIC FUEL PRICE - 21/11/2019 (SA c/l)	723.301	697.532	720.019	724.587	720.323
PRESS RELEASE CONTRIBUTION TO BFP 06/11/2019 - 21/11/2019 (SA c/l)	709.170	677.170	754.630	761.030	756.128
UNIT OVER/(UNDER) RECOVERY - 21/11/2019 (SA c/l)	(14.131)	(20.362)	34.611	36.443	35.805
AVERAGE BASIC FUEL PRICE 01/11/2019 - 21/11/2019	722.296	688.355	736.257	741.482	737.049
AVERAGE UNIT OVER/(UNDER) RECOVERY 01/11/2019 - 21/11/2019	(10.526)	(8.585)	21.573	22.348	23.679

### ANALYSIS MOVEMENT OF AVERAGE OVER/(UNDER) RECOVERY

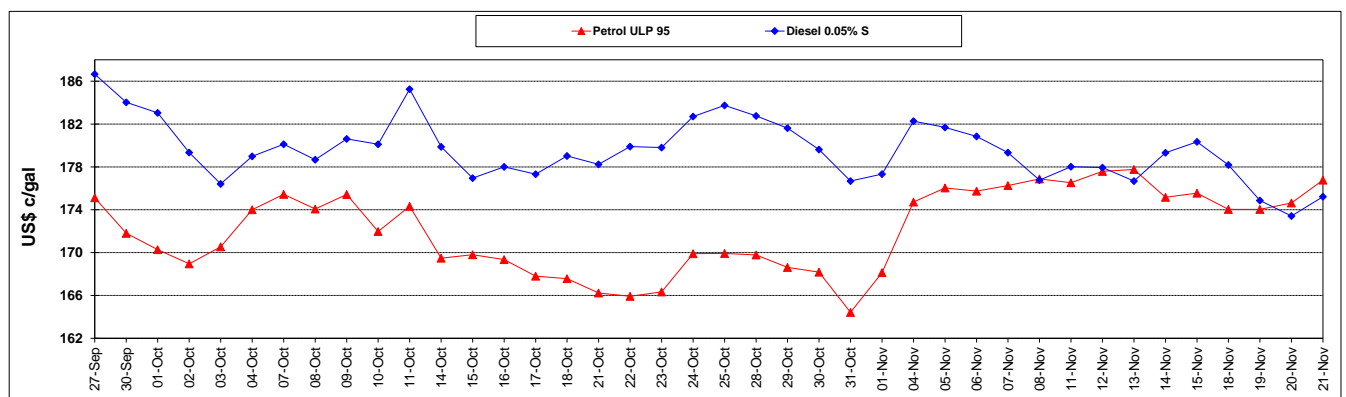
	PETROL 95	PETROL 93	DIESEL 0.05%	DIESEL 0.005%	ILL. PAR.
- MOVEMENT IN INTERNATIONAL PRODUCT PRICES	(15.460)	(13.288)	16.543	17.282	18.644
- MOVEMENT IN EXCHANGE RATE	4.934	4.703	5.030	5.066	5.035
AVERAGE UNIT OVER/(UNDER) RECOVERY 01/11/2019 - 21/11/2019	(10.526)	(8.585)	21.573	22.348	23.679

**R/\$ EXCHANGE RATE - (R/\$14.7307 - 21/11/2019)**

### EXCHANGE RATE USED IN BASIC FUEL PRICE



### INTERNATIONAL PRODUCT PRICES OF BASKET USED IN BASIC FUEL PRICE



### BASIC FUEL PRICE IN SA CENTS PER LITRE

