

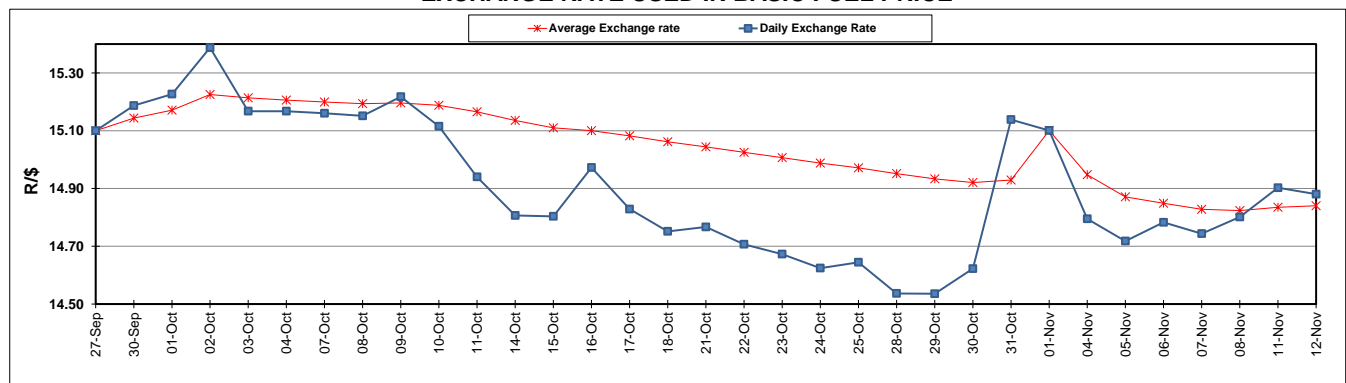
	PETROL 95 ULP	PETROL 93 ULP & LRP	DIESEL 0.05%	DIESEL 0.005%	ILL. PAR.
GAUTENG PUMP PRICE (SA c/l) AS FROM 06/11/2019	1,608.000	1,566.000	-	-	-
WHOLESALE PRICE (SA c/l) AS FROM 06/11/2019	-	-	1,468.210	1,474.610	938.678
SINGLE NATIONAL MAXIMUM RETAIL PRICE	-	-	-	-	1,197.000
BASIC FUEL PRICE - 12/11/2019 (SA c/l)	733.772	693.073	738.032	742.676	740.697
PRESS RELEASE CONTRIBUTION TO BFP 06/11/2019 - 12/11/2019 (SA c/l)	709.170	677.170	754.630	761.030	756.128
UNIT OVER/(UNDER) RECOVERY - 12/11/2019 (SA c/l)	(24.602)	(15.903)	16.598	18.354	15.431
AVERAGE BASIC FUEL PRICE 01/11/2019 - 12/11/2019	722.515	686.518	741.298	747.324	742.887
AVERAGE UNIT OVER/(UNDER) RECOVERY 01/11/2019 - 12/11/2019	(8.470)	(4.473)	19.332	18.956	21.866

ANALYSIS MOVEMENT OF AVERAGE OVER/(UNDER) RECOVERY

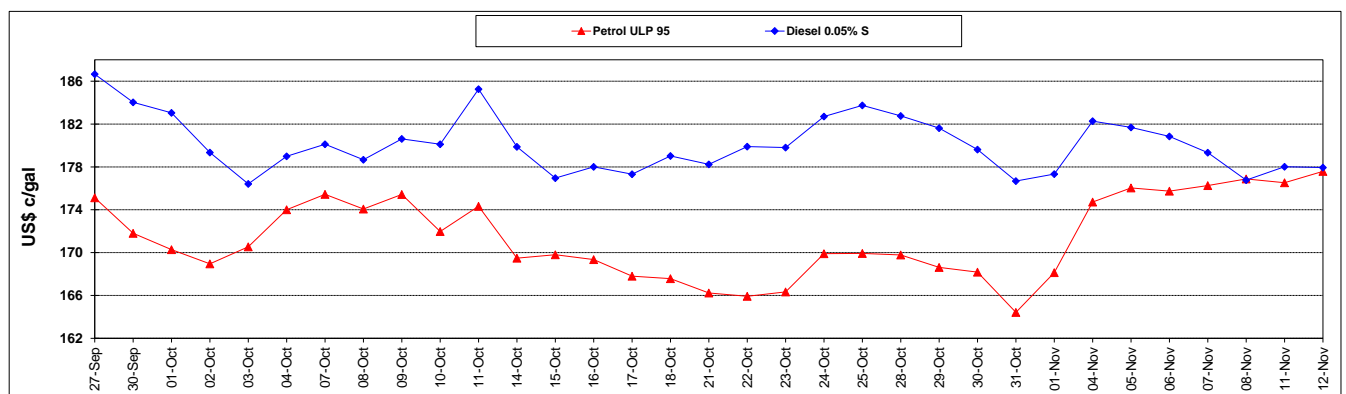
	PETROL 95	PETROL 93	DIESEL 0.05%	DIESEL 0.005%	ILL. PAR.
- MOVEMENT IN INTERNATIONAL PRODUCT PRICES	(12.793)	(8.581)	14.896	14.484	17.421
- MOVEMENT IN EXCHANGE RATE	4.323	4.108	4.436	4.472	4.445
AVERAGE UNIT OVER/(UNDER) RECOVERY 01/11/2019 - 12/11/2019	(8.470)	(4.473)	19.332	18.956	21.866

R/\$ EXCHANGE RATE - (R/\$14.8803 - 12/11/2019)

EXCHANGE RATE USED IN BASIC FUEL PRICE



INTERNATIONAL PRODUCT PRICES OF BASKET USED IN BASIC FUEL PRICE



BASIC FUEL PRICE IN SA CENTS PER LITRE

