

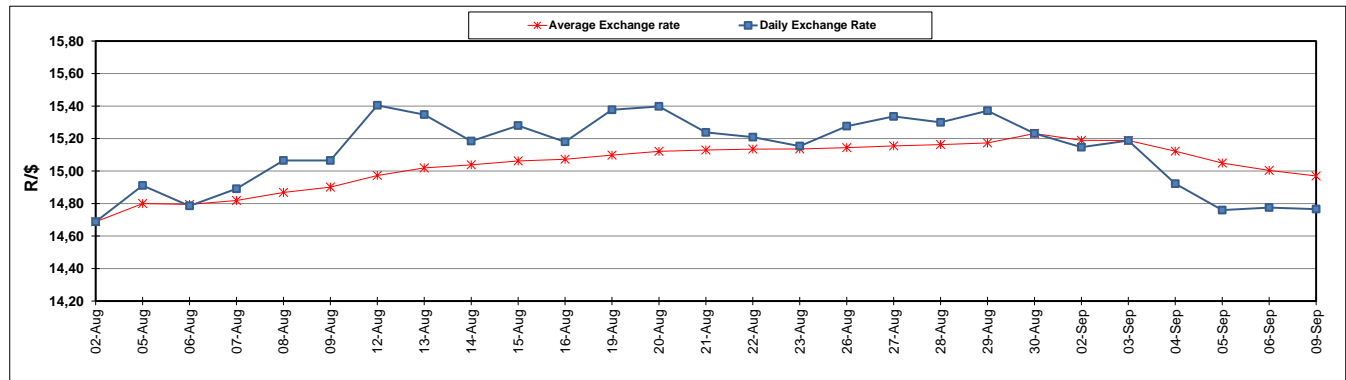
	PETROL 95 ULP	PETROL 93 ULP & LRP	DIESEL 0.05%	DIESEL 0.005%	ILL. PAR.
GAUTENG PUMP PRICE (SA c/l) AS FROM 04/09/2019	1,603.000	1,583.000	-	-	-
WHOLESALE PRICE (SA c/l) AS FROM 04/09/2019	-	-	1,459.210	1,463.610	936.678
SINGLE NATIONAL MAXIMUM RETAIL PRICE	-	-	-	-	1,195.000
BASIC FUEL PRICE - 09/09/2019 (SA c/l)	694.625	671.090	758.996	762.292	763.255
PRESS RELEASE CONTRIBUTION TO BFP 04/09/2019 - 09/09/2019 (SA c/l)	704.170	694.170	745.630	750.030	754.128
UNIT OVER/(UNDER) RECOVERY - 09/09/2019 (SA c/l)	9.545	23.080	(13.366)	(12.262)	(9.127)
AVERAGE BASIC FUEL PRICE 30/08/2019 - 09/09/2019	684.820	662.994	746.779	749.959	749.508
AVERAGE UNIT OVER/(UNDER) RECOVERY 30/08/2019 - 09/09/2019	14.636	26.461	(12.292)	(11.072)	(5.666)

ANALYSIS MOVEMENT OF AVERAGE OVER/(UNDER) RECOVERY

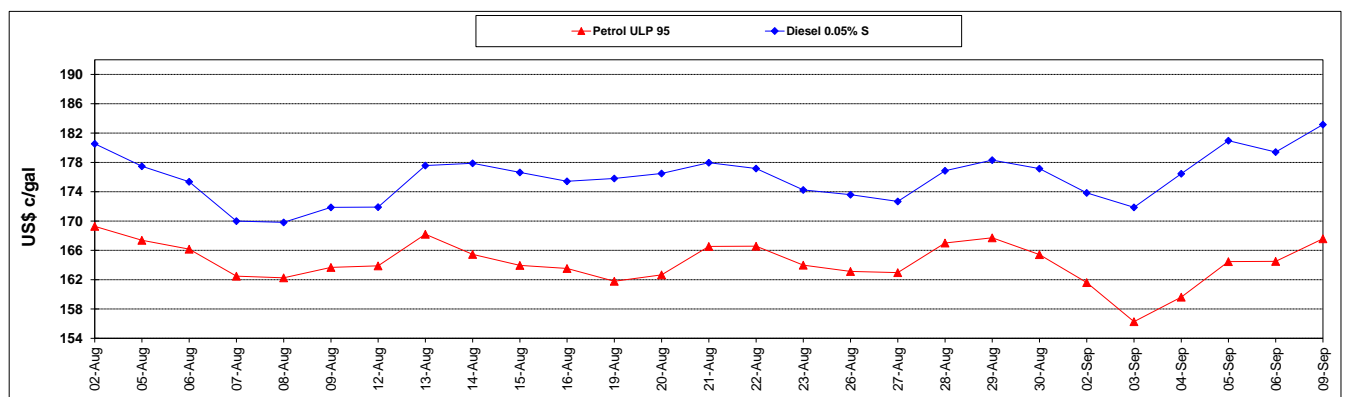
	PETROL 95	PETROL 93	DIESEL 0.05%	DIESEL 0.005%	ILL. PAR.
- MOVEMENT IN INTERNATIONAL PRODUCT PRICES	5.340	17.462	(22.429)	(21.252)	(15.840)
- MOVEMENT IN EXCHANGE RATE	9.296	9.000	10.137	10.180	10.174
AVERAGE UNIT OVER/(UNDER) RECOVERY 30/08/2019 - 09/09/2019	14.636	26.461	(12.292)	(11.072)	(5.666)

R/\$ EXCHANGE RATE - (R/\$14.7659 - 09/09/2019)

EXCHANGE RATE USED IN BASIC FUEL PRICE



INTERNATIONAL PRODUCT PRICES OF BASKET USED IN BASIC FUEL PRICE



BASIC FUEL PRICE IN SA CENTS PER LITRE

