

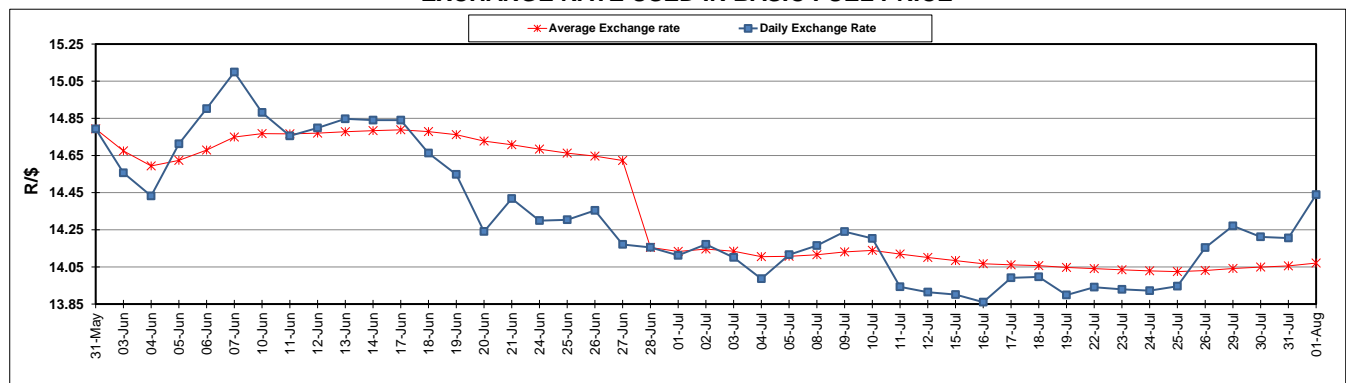
	PETROL 95 ULP	PETROL 93 ULP & LRP	DIESEL 0.05%	DIESEL 0.005%	ILL. PAR.
GAUTENG PUMP PRICE (SA c/l) AS FROM 03/07/2019	1 581.000	1 561.000	-	-	-
WHOLESALE PRICE (SA c/l) AS FROM 03/07/2019	-	-	1 446.500	1 451.900	916.678
SINGLE NATIONAL MAXIMUM RETAIL PRICE	-	-	-	-	1 165.000
BASIC FUEL PRICE - 01/08/2019 (SA c/l)	704.530	690.181	750.528	754.335	755.934
PRESS RELEASE CONTRIBUTION TO BFP 03/07/2019 - 01/08/2019 (SA c/l)	677.790	667.790	728.630	734.030	732.128
UNIT OVER/(UNDER) RECOVERY - 01/08/2019 (SA c/l)	(26.740)	(22.391)	(21.898)	(20.305)	(23.806)
AVERAGE BASIC FUEL PRICE 28/06/2019 - 01/08/2019	703.561	688.498	728.247	732.634	736.607
AVERAGE UNIT OVER/(UNDER) RECOVERY 28/06/2019 - 01/08/2019	(15.425)	(10.242)	8.303	9.436	2.361

ANALYSIS MOVEMENT OF AVERAGE OVER/(UNDER) RECOVERY

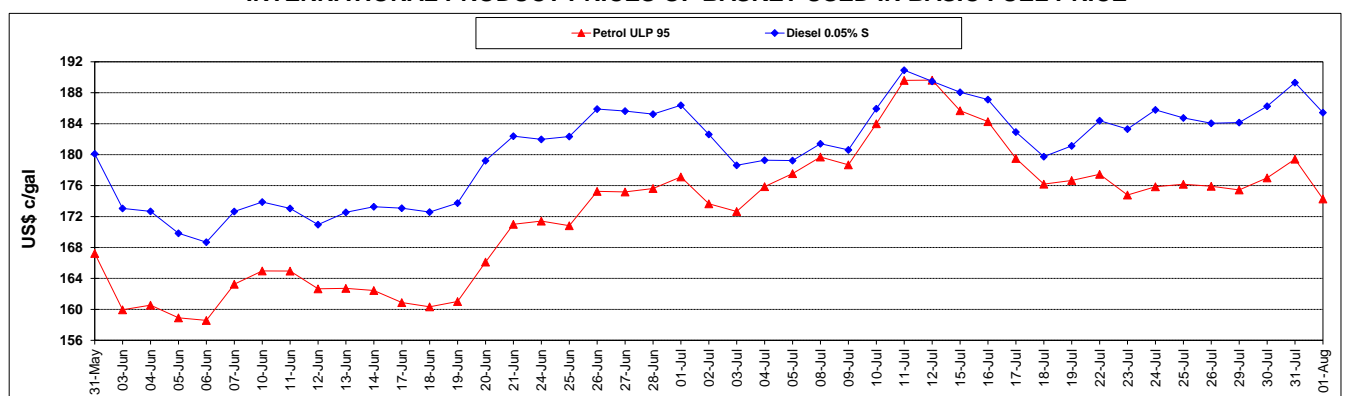
	PETROL 95	PETROL 93	DIESEL 0.05%	DIESEL 0.005%	ILL. PAR.
- MOVEMENT IN INTERNATIONAL PRODUCT PRICES	(43.016)	(37.242)	(20.256)	(19.295)	(26.526)
- MOVEMENT IN EXCHANGE RATE	27.591	27.000	28.559	28.731	28.887
AVERAGE UNIT OVER/(UNDER) RECOVERY 28/06/2019 - 01/08/2019	(15.425)	(10.242)	8.303	9.436	2.361

R/\$ EXCHANGE RATE - (R/\$14.4388 - 01/08/2019)

EXCHANGE RATE USED IN BASIC FUEL PRICE



INTERNATIONAL PRODUCT PRICES OF BASKET USED IN BASIC FUEL PRICE



BASIC FUEL PRICE IN SA CENTS PER LITRE

