

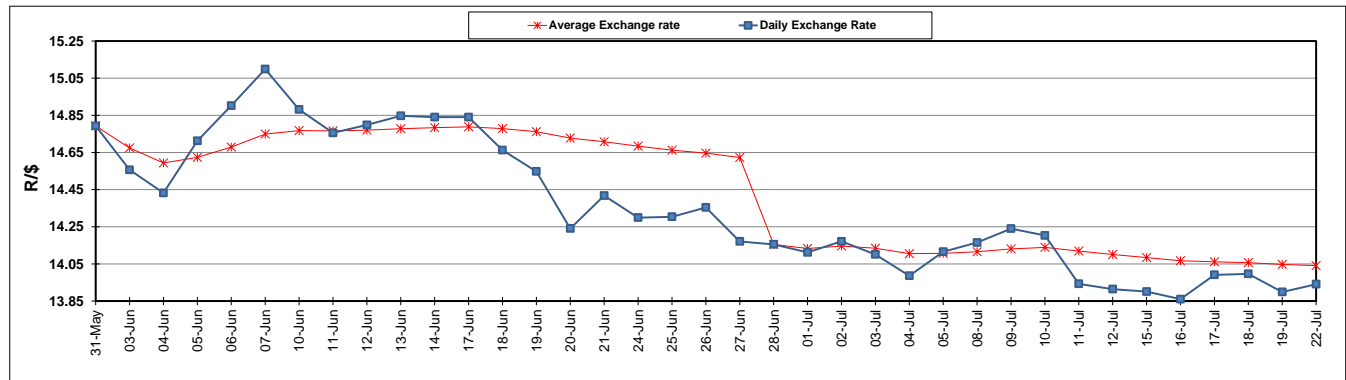
	PETROL 95 ULP	PETROL 93 ULP & LRP	DIESEL 0.05%	DIESEL 0.005%	ILL. PAR.
GAUTENG PUMP PRICE (SA c/l) AS FROM 03/07/2019	1 581.000	1 561.000	-	-	-
WHOLESALE PRICE (SA c/l) AS FROM 03/07/2019	-	-	1 446.500	1 451.900	916.678
SINGLE NATIONAL MAXIMUM RETAIL PRICE	-	-	-	-	1 165.000
BASIC FUEL PRICE - 22/07/2019 (SA c/l)	692.843	676.286	721.686	726.249	732.091
PRESS RELEASE CONTRIBUTION TO BFP 03/07/2019 - 22/07/2019 (SA c/l)	677.790	667.790	728.630	734.030	732.128
UNIT OVER/(UNDER) RECOVERY - 22/07/2019 (SA c/l)	(15.053)	(8.496)	6.944	7.781	0.037
AVERAGE BASIC FUEL PRICE 28/06/2019 - 22/07/2019	706.119	691.977	724.529	729.257	732.727
AVERAGE UNIT OVER/(UNDER) RECOVERY 28/06/2019 - 22/07/2019	(13.113)	(8.796)	15.748	16.597	9.460

ANALYSIS MOVEMENT OF AVERAGE OVER/(UNDER) RECOVERY

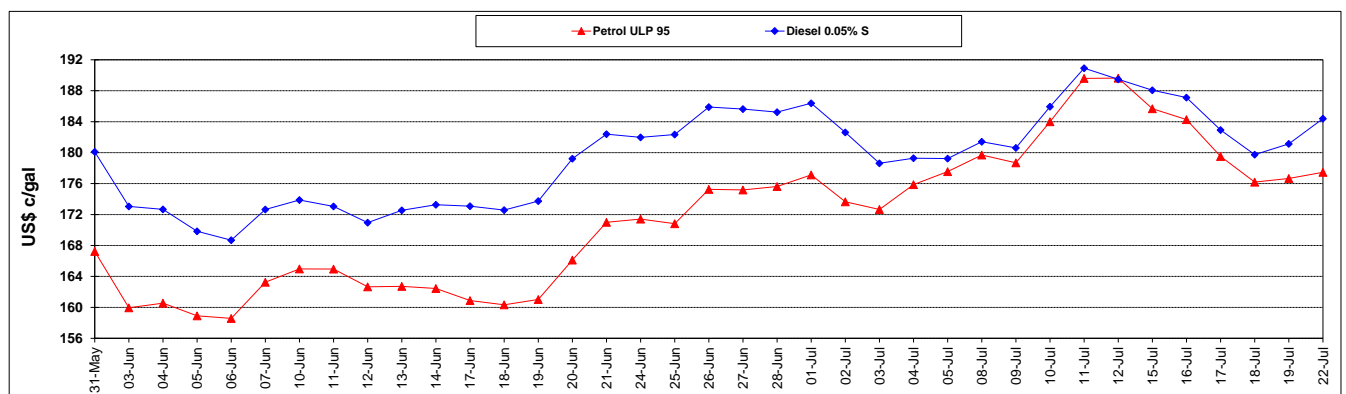
	PETROL 95	PETROL 93	DIESEL 0.05%	DIESEL 0.005%	ILL. PAR.
- MOVEMENT IN INTERNATIONAL PRODUCT PRICES	(42.378)	(37.473)	(14.279)	(13.626)	(20.907)
- MOVEMENT IN EXCHANGE RATE	29.264	28.678	30.027	30.223	30.367
AVERAGE UNIT OVER/(UNDER) RECOVERY 28/06/2019 - 22/07/2019	(13.113)	(8.796)	15.748	16.597	9.460

R/\$ EXCHANGE RATE - (R/\$13.9408 - 22/07/2019)

EXCHANGE RATE USED IN BASIC FUEL PRICE



INTERNATIONAL PRODUCT PRICES OF BASKET USED IN BASIC FUEL PRICE



BASIC FUEL PRICE IN SA CENTS PER LITRE

