

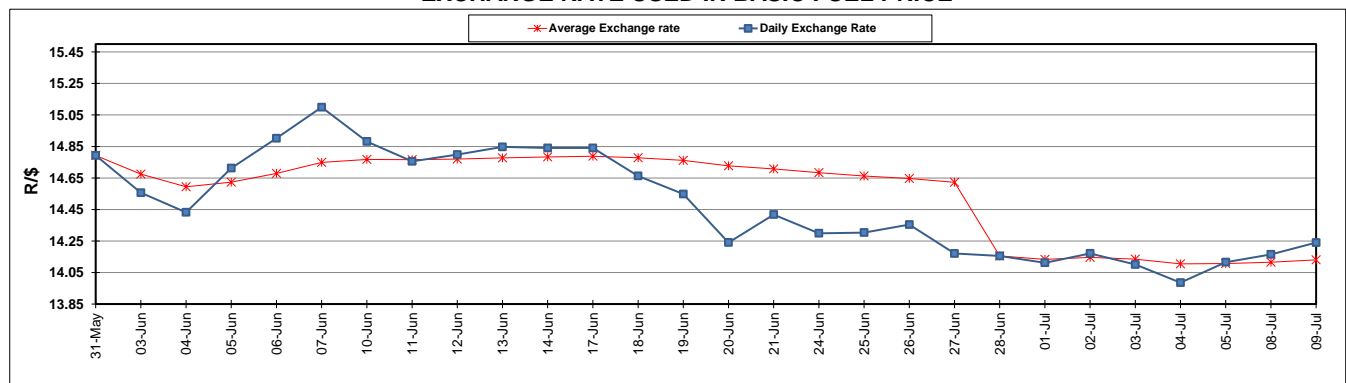
	PETROL 95 ULP	PETROL 93 ULP & LRP	DIESEL 0.05%	DIESEL 0.005%	ILL. PAR.
GAUTENG PUMP PRICE (SA c/l) AS FROM 03/07/2019	1 581.000	1 561.000	-	-	-
WHOLESALE PRICE (SA c/l) AS FROM 03/07/2019	-	-	1 446.500	1 451.900	916.678
SINGLE NATIONAL MAXIMUM RETAIL PRICE	-	-	-	-	1 165.000
BASIC FUEL PRICE - 09/07/2019 (SA c/l)	712.320	696.223	722.781	727.874	730.262
PRESS RELEASE CONTRIBUTION TO BFP 03/07/2019 - 09/07/2019 (SA c/l)	677.790	667.790	728.630	734.030	732.128
UNIT OVER/(UNDER) RECOVERY - 09/07/2019 (SA c/l)	(34.530)	(28.433)	5.849	6.156	1.866
AVERAGE BASIC FUEL PRICE 28/06/2019 - 09/07/2019	698.581	686.494	721.751	726.872	728.847
AVERAGE UNIT OVER/(UNDER) RECOVERY 28/06/2019 - 09/07/2019	11.542	14.004	31.629	32.283	24.656

ANALYSIS MOVEMENT OF AVERAGE OVER/(UNDER) RECOVERY

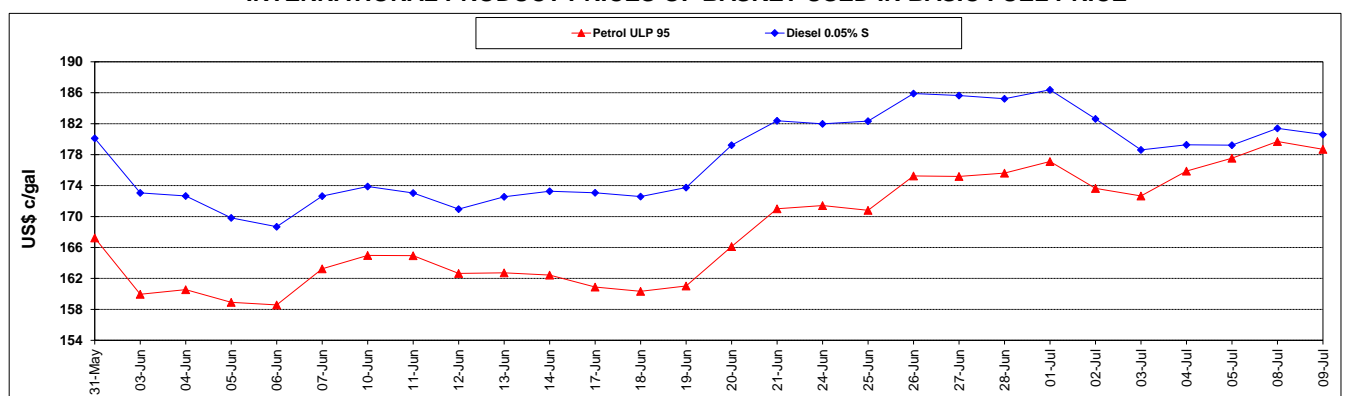
	PETROL 95	PETROL 93	DIESEL 0.05%	DIESEL 0.005%	ILL. PAR.
- MOVEMENT IN INTERNATIONAL PRODUCT PRICES	(12.781)	(9.898)	6.499	6.975	(0.721)
- MOVEMENT IN EXCHANGE RATE	24.323	23.902	25.130	25.308	25.377
AVERAGE UNIT OVER/(UNDER) RECOVERY 28/06/2019 - 09/07/2019	11.542	14.004	31.629	32.283	24.656

R/\$ EXCHANGE RATE - (R/\$14.2399 - 09/07/2019)

EXCHANGE RATE USED IN BASIC FUEL PRICE



INTERNATIONAL PRODUCT PRICES OF BASKET USED IN BASIC FUEL PRICE



BASIC FUEL PRICE IN SA CENTS PER LITRE

