

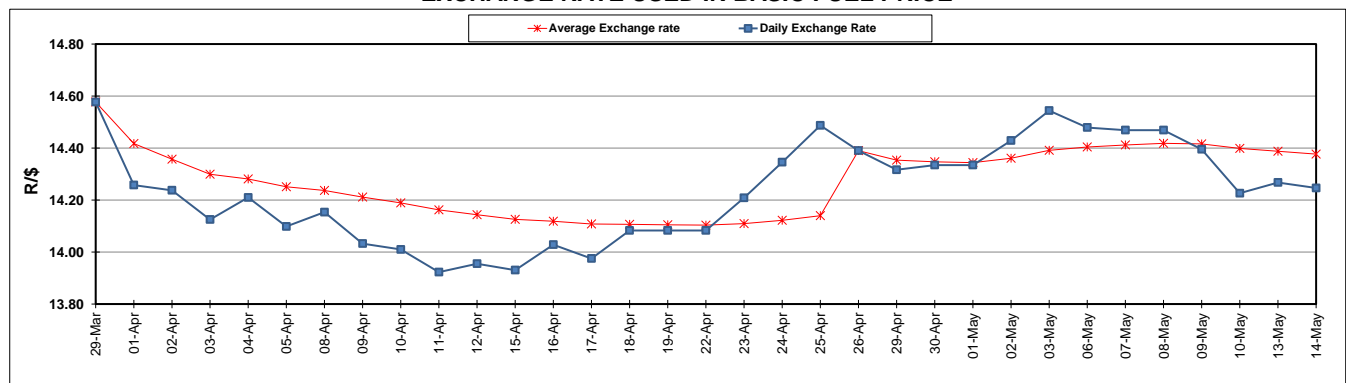
	PETROL 95 ULP	PETROL 93 ULP & LRP	DIESEL 0.05%	DIESEL 0.005%	ILL. PAR.
GAUTENG PUMP PRICE (SA c/l) AS FROM 01/05/2019	1 667.000	1 648.000	-	-	-
WHOLESALE PRICE (SA c/l) AS FROM 01/05/2019	-	-	1 488.120	1 494.520	965.678
SINGLE NATIONAL MAXIMUM RETAIL PRICE	-	-	-	-	1 231.000
BASIC FUEL PRICE - 14/05/2019 (SA c/l)	738.329	727.507	784.810	792.162	780.007
PRESS RELEASE CONTRIBUTION TO BFP 01/05/2019 - 14/05/2019 (SA c/l)	777.170	768.170	784.630	791.030	781.128
UNIT OVER/(UNDER) RECOVERY - 14/05/2019 (SA c/l)	38.841	40.663	(0.180)	(1.132)	1.121
AVERAGE BASIC FUEL PRICE 26/04/2019 - 14/05/2019	760.192	749.096	795.879	802.597	789.591
AVERAGE UNIT OVER/(UNDER) RECOVERY 26/04/2019 - 14/05/2019	4.516	6.613	(11.480)	(11.567)	(9.156)

ANALYSIS MOVEMENT OF AVERAGE OVER/(UNDER) RECOVERY

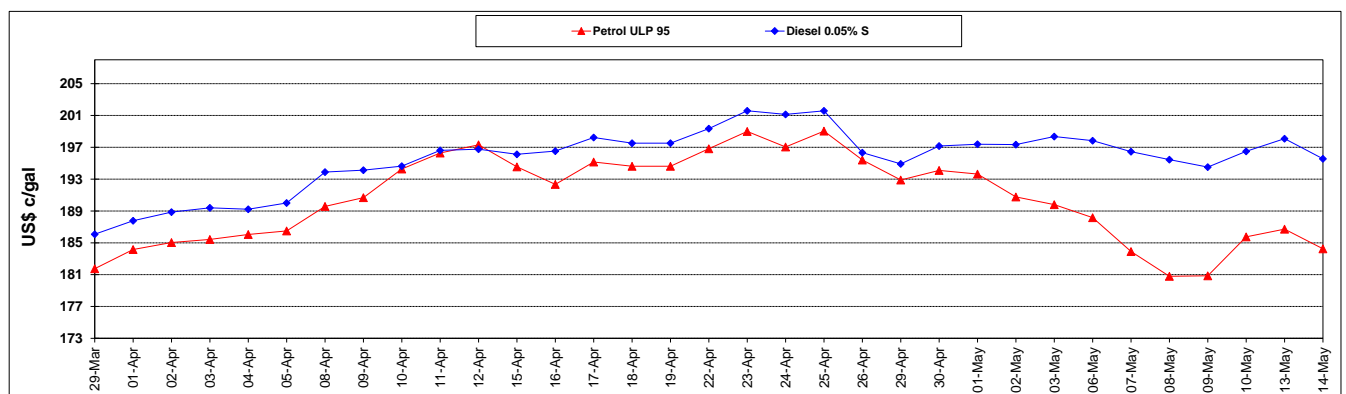
	PETROL 95	PETROL 93	DIESEL 0.05%	DIESEL 0.005%	ILL. PAR.
- MOVEMENT IN INTERNATIONAL PRODUCT PRICES	17.037	18.950	1.629	1.652	3.850
- MOVEMENT IN EXCHANGE RATE	(12.521)	(12.338)	(13.109)	(13.219)	(13.005)
AVERAGE UNIT OVER/(UNDER) RECOVERY 26/04/2019 - 14/05/2019	4.516	6.613	(11.480)	(11.567)	(9.156)

R/\$ EXCHANGE RATE - (R/\$14.2463 - 14/05/2019)

EXCHANGE RATE USED IN BASIC FUEL PRICE



INTERNATIONAL PRODUCT PRICES OF BASKET USED IN BASIC FUEL PRICE



BASIC FUEL PRICE IN SA CENTS PER LITRE

