

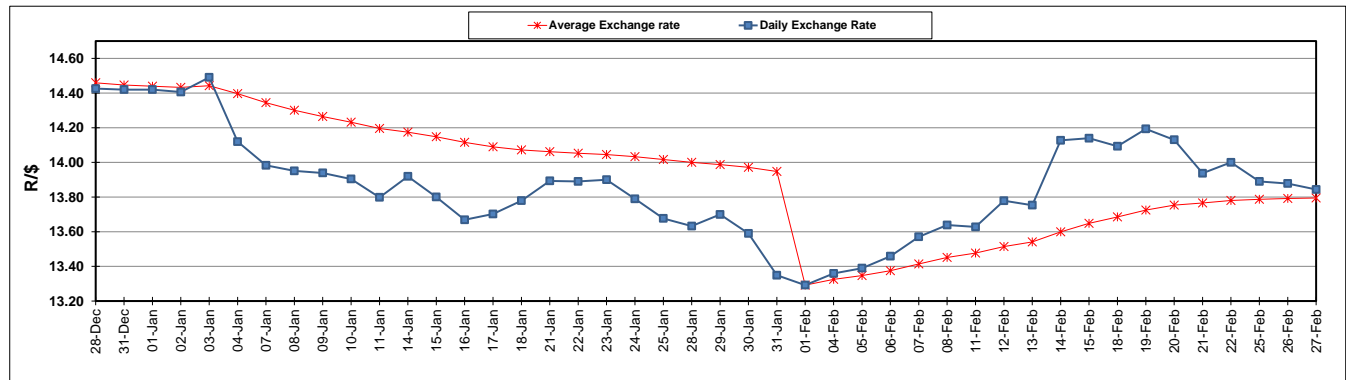
	PETROL 95 ULP	PETROL 93 ULP & LRP	DIESEL 0.05%	DIESEL 0.005%	ILL. PAR.
GAUTENG PUMP PRICE (SA c/l) AS FROM 06/02/2019	1 408.000	1 386.000	-	-	-
WHOLESALE PRICE (SA c/l) AS FROM 06/02/2019	-	-	1 314.420	1 318.820	823.678
SINGLE NATIONAL MAXIMUM RETAIL PRICE	-	-	-	-	1 060.000
BASIC FUEL PRICE - 27/02/2019 (SA c/l)	647.891	636.802	755.031	761.409	741.415
PRESS RELEASE CONTRIBUTION TO BFP 06/02/2019 - 27/02/2019 (SA c/l)	543.470	531.470	636.630	641.030	646.128
UNIT OVER/(UNDER) RECOVERY - 27/02/2019 (SA c/l)	(104.421)	(105.332)	(118.401)	(120.379)	(95.287)
AVERAGE BASIC FUEL PRICE 01/02/2019 - 27/02/2019	614.704	603.530	725.951	731.980	721.104
AVERAGE UNIT OVER/(UNDER) RECOVERY 01/02/2019 - 27/02/2019	(72.339)	(73.165)	(89.479)	(91.266)	(74.187)

### ANALYSIS MOVEMENT OF AVERAGE OVER/(UNDER) RECOVERY

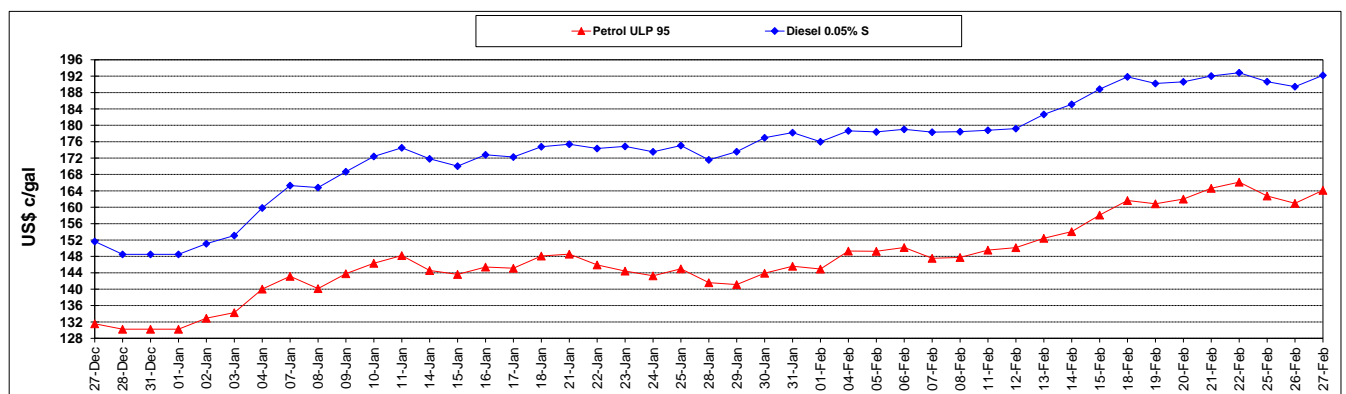
	PETROL 95	PETROL 93	DIESEL 0.05%	DIESEL 0.005%	ILL. PAR.
- MOVEMENT IN INTERNATIONAL PRODUCT PRICES	(80.222)	(80.905)	(98.788)	(100.653)	(83.434)
- MOVEMENT IN EXCHANGE RATE	7.883	7.740	9.309	9.387	9.247
AVERAGE UNIT OVER/(UNDER) RECOVERY 01/02/2019 - 27/02/2019	(72.339)	(73.165)	(89.479)	(91.266)	(74.187)

**R/\$ EXCHANGE RATE - (R/\$13.8435 - 27/02/2019)**

### EXCHANGE RATE USED IN BASIC FUEL PRICE



### INTERNATIONAL PRODUCT PRICES OF BASKET USED IN BASIC FUEL PRICE



### BASIC FUEL PRICE IN SA CENTS PER LITRE

