

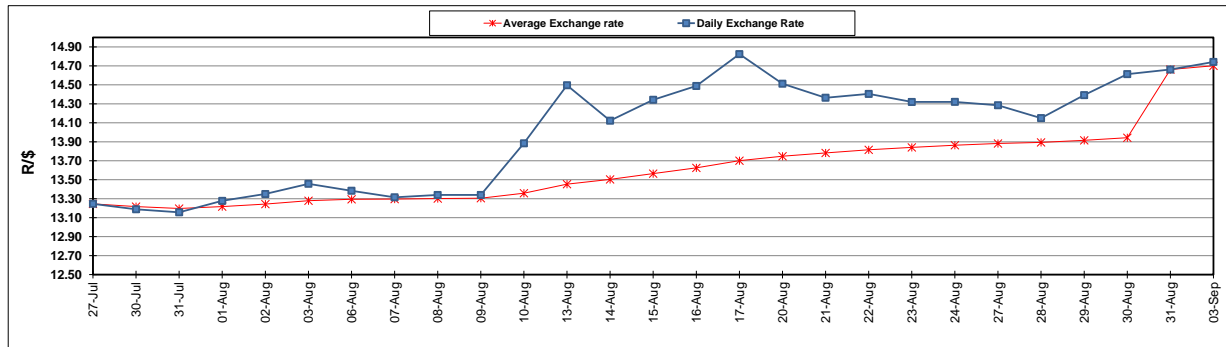
	PETROL 95 ULP	PETROL 93 ULP & LRP	DIESEL 0.05%	DIESEL 0.005%	ILL. PAR.
GAUTENG PUMP PRICE (SA c/l) AS FROM 05/09/2018	1 608.000	1 586.000	-	-	-
WHOLESALE PRICE (SA c/l) AS FROM 05/09/2018	-	-	1 440.830	1 445.230	953.088
SINGLE NATIONAL MAXIMUM RETAIL PRICE	-	-	-	-	1 233.000
BASIC FUEL PRICE - 03/09/2018 (SA c/l)	859.410	845.994	893.677	898.397	883.008
PRESS RELEASE CONTRIBUTION TO BFP 31/08/2018 - 03/09/2018 (SA c/l)	751.070	739.070	767.630	772.030	780.128
UNIT OVER/(UNDER) RECOVERY - 03/09/2018 (SA c/l)	(108.340)	(106.924)	(126.047)	(126.367)	(102.880)
AVERAGE BASIC FUEL PRICE 31/08/2018 - 03/09/2018	853.815	840.435	887.035	891.964	876.796
AVERAGE UNIT OVER/(UNDER) RECOVERY 31/08/2018 - 03/09/2018	(102.745)	(101.365)	(119.405)	(119.934)	(96.668)

ANALYSIS MOVEMENT OF AVERAGE OVER/(UNDER) RECOVERY

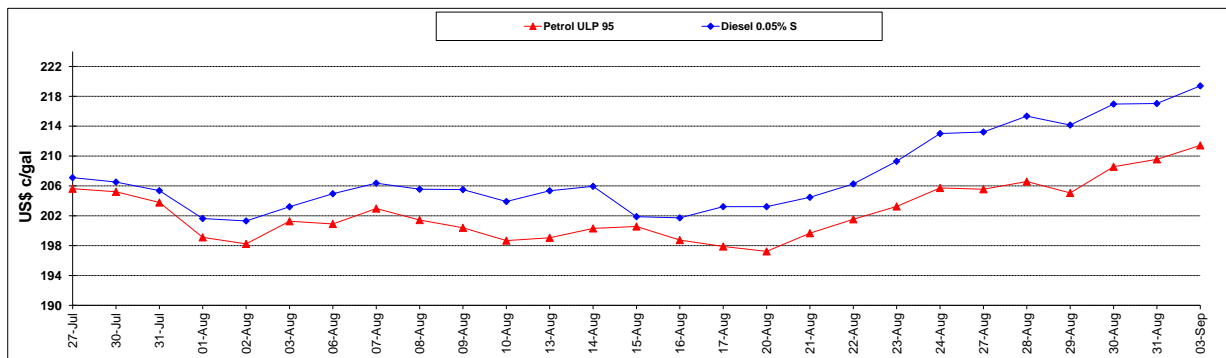
	PETROL 95	PETROL 93	DIESEL 0.05%	DIESEL 0.005%	ILL. PAR.
- MOVEMENT IN INTERNATIONAL PRODUCT PRICES	(58.683)	(57.993)	(73.628)	(73.903)	(51.420)
- MOVEMENT IN EXCHANGE RATE	(44.062)	(43.372)	(45.777)	(46.031)	(45.248)
AVERAGE UNIT OVER/(UNDER) RECOVERY 31/08/2018 - 03/09/2018	(102.745)	(101.365)	(119.405)	(119.934)	(96.668)

R/\$ EXCHANGE RATE - (R/\$14.7415 - 03/09/2018)

EXCHANGE RATE USED IN BASIC FUEL PRICE



INTERNATIONAL PRODUCT PRICES OF BASKET USED IN BASIC FUEL PRICE



BASIC FUEL PRICE IN SA CENTS PER LITRE

