

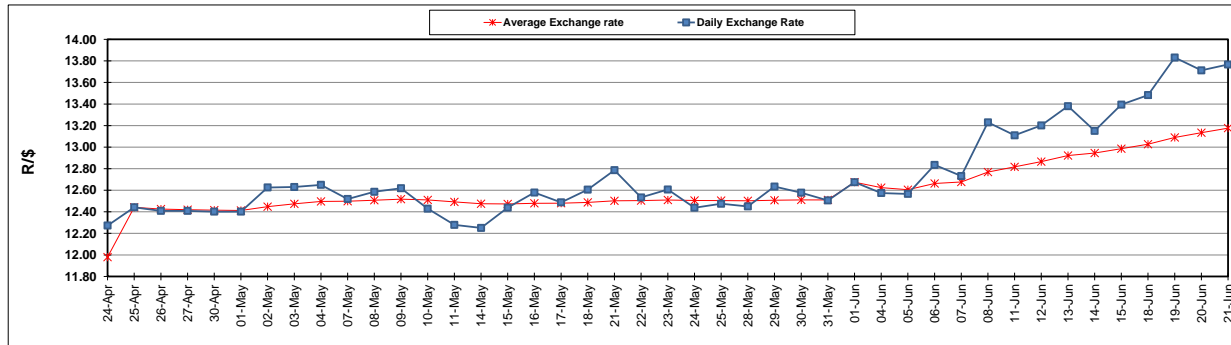
	PETROL 95 ULP	PETROL 93 ULP & LRP	DIESEL 0.05%	DIESEL 0.005%	ILL. PAR.
GAUTENG PUMP PRICE (SA c/l) AS FROM 06/06/2018	1 579.000	1 554.000	-	-	-
WHOLESALE PRICE (SA c/l) AS FROM 06/06/2018	-	-	1 418.830	1 425.230	927.088
SINGLE NATIONAL MAXIMUM RETAIL PRICE	-	-	-	-	1 198.000
BASIC FUEL PRICE - 21/06/2018 (SA c/l)	736.286	724.982	760.359	765.183	768.420
PRESS RELEASE CONTRIBUTION TO BFP 06/06/2018 - 21/06/2018 (SA c/l)	727.070	712.070	745.630	752.030	754.128
UNIT OVER/(UNDER) RECOVERY - 21/06/2018 (SA c/l)	(9.216)	(12.912)	(14.729)	(13.153)	(14.292)
AVERAGE BASIC FUEL PRICE 01/06/2018 - 21/06/2018	734.835	722.989	754.957	759.198	758.321
AVERAGE UNIT OVER/(UNDER) RECOVERY 01/06/2018 - 21/06/2018	(24.165)	(27.319)	(26.327)	(24.568)	(20.593)

ANALYSIS MOVEMENT OF AVERAGE OVER/(UNDER) RECOVERY

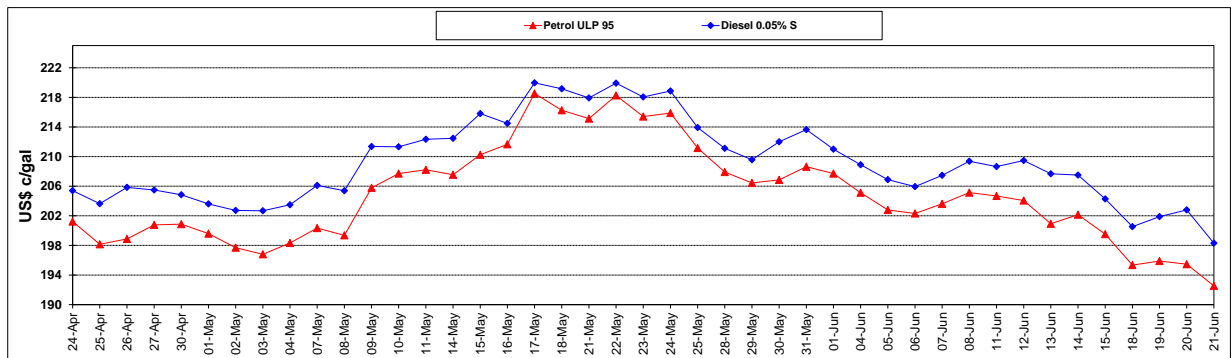
	PETROL 95	PETROL 93	DIESEL 0.05%	DIESEL 0.005%	ILL. PAR.
- MOVEMENT IN INTERNATIONAL PRODUCT PRICES	12.984	9.231	11.839	13.813	17.743
- MOVEMENT IN EXCHANGE RATE	(37.149)	(36.550)	(38.166)	(38.381)	(38.336)
AVERAGE UNIT OVER/(UNDER) RECOVERY 01/06/2018 - 21/06/2018	(24.165)	(27.319)	(26.327)	(24.568)	(20.593)

R/\$ EXCHANGE RATE - (R/\$13.7665 - 21/06/2018)

EXCHANGE RATE USED IN BASIC FUEL PRICE



INTERNATIONAL PRODUCT PRICES OF BASKET USED IN BASIC FUEL PRICE



BASIC FUEL PRICE IN SA CENTS PER LITRE

