

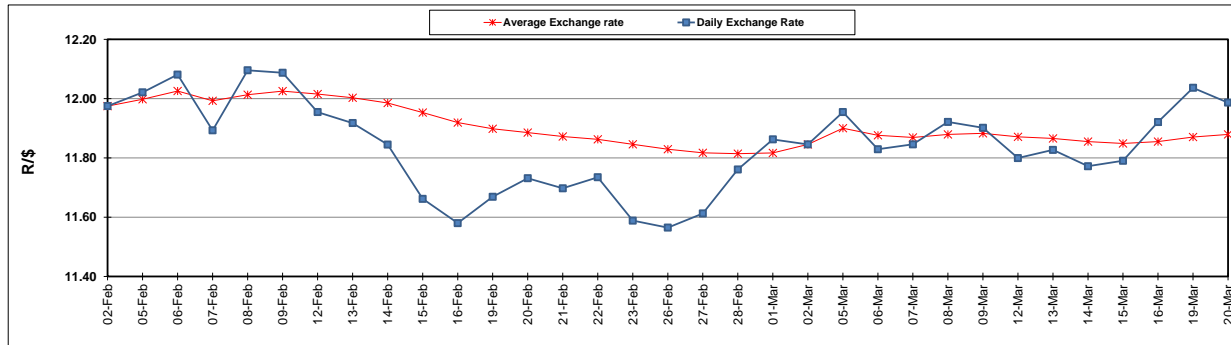
	PETROL 95 ULP	PETROL 93 ULP & LRP	DIESEL 0.05%	DIESEL 0.005%	ILL. PAR.
GAUTENG PUMP PRICE (SA c/l) AS FROM 07/03/2018	1 376.000	1 354.000	-	-	-
WHOLESALE PRICE (SA c/l) AS FROM 07/03/2018	-	-	1 209.630	1 215.030	795.388
SINGLE NATIONAL MAXIMUM RETAIL PRICE	-	-	-	-	1 026.000
BASIC FUEL PRICE - 20/03/2018 (SA c/l)	618.970	603.410	623.837	628.716	630.963
PRESS RELEASE CONTRIBUTION TO BFP 07/03/2018 - 20/03/2018 (SA c/l)	586.170	574.170	598.630	604.030	625.128
UNIT OVER/(UNDER) RECOVERY - 20/03/2018 (SA c/l)	(32.800)	(29.240)	(25.207)	(24.686)	(5.835)
AVERAGE BASIC FUEL PRICE 02/03/2018 - 20/03/2018	593.886	579.967	601.817	606.493	619.237
AVERAGE UNIT OVER/(UNDER) RECOVERY 02/03/2018 - 20/03/2018	0.592	2.511	7.660	7.690	11.199

### ANALYSIS MOVEMENT OF AVERAGE OVER/(UNDER) RECOVERY

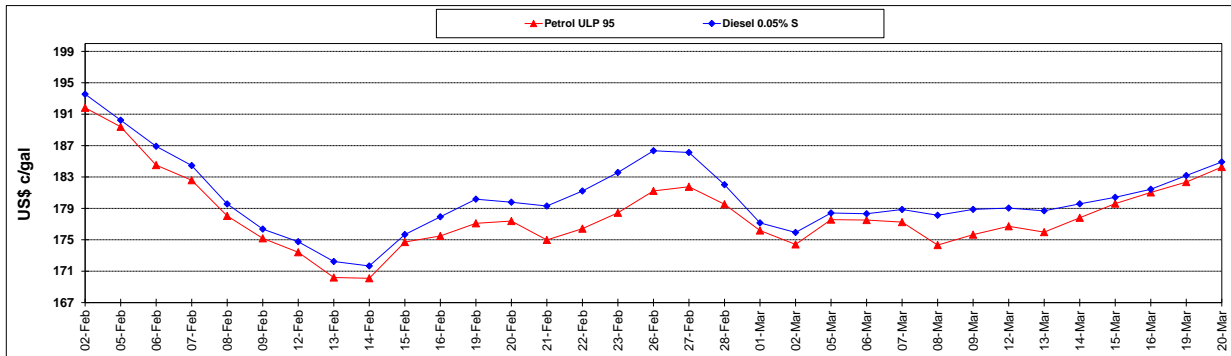
	PETROL 95	PETROL 93	DIESEL 0.05%	DIESEL 0.005%	ILL. PAR.
- MOVEMENT IN INTERNATIONAL PRODUCT PRICES	3.722	5.567	10.830	10.887	14.462
- MOVEMENT IN EXCHANGE RATE	(3.130)	(3.056)	(3.171)	(3.196)	(3.263)
AVERAGE UNIT OVER/(UNDER) RECOVERY 02/03/2018 - 20/03/2018	0.592	2.511	7.660	7.690	11.199

### R/\$ EXCHANGE RATE - (R/\$11.9865 - 20/03/2018)

#### EXCHANGE RATE USED IN BASIC FUEL PRICE



#### INTERNATIONAL PRODUCT PRICES OF BASKET USED IN BASIC FUEL PRICE



#### BASIC FUEL PRICE IN SA CENTS PER LITRE

