

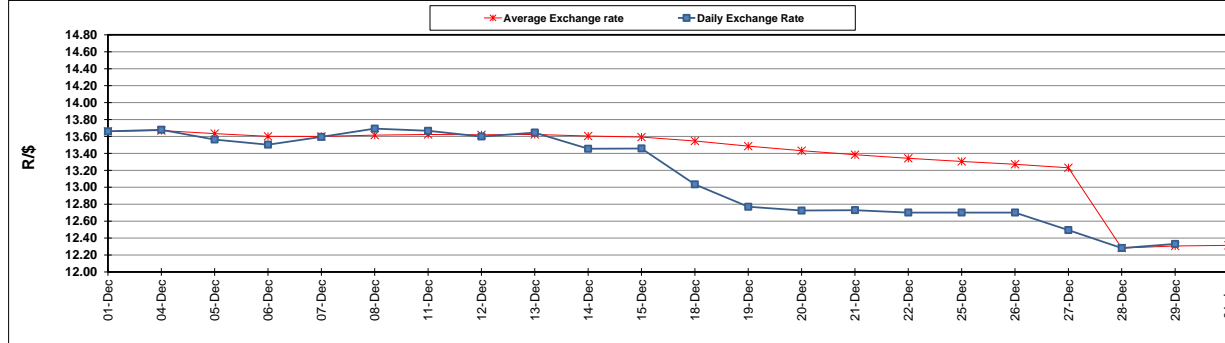
	PETROL 95 ULP	PETROL 93 ULP & LRP	DIESEL 0.05%	DIESEL 0.005%	ILL. PAR.
GAUTENG PUMP PRICE (SA c/l) AS FROM 03/01/2018	1 442.000	1 420.000	-	-	-
WHOLESALE PRICE (SA c/l) AS FROM 03/01/2018	-	-	1 273.630	1 276.030	837.388
SINGLE NATIONAL MAXIMUM RETAIL PRICE	-	-	-	-	1 082.000
BASIC FUEL PRICE - 01/01/2018 (SA c/l)	614.007	604.489	638.613	640.544	642.638
PRESS RELEASE CONTRIBUTION TO BFP 28/12/2017 - 01/01/2018 (SA c/l)	686.170	669.170	684.630	691.030	695.128
UNIT OVER/(UNDER) RECOVERY - 01/01/2018 (SA c/l)	72.163	64.681	46.017	50.486	52.490
AVERAGE BASIC FUEL PRICE 28/12/2017 - 01/01/2018	614.620	604.718	637.360	639.487	641.045
AVERAGE UNIT OVER/(UNDER) RECOVERY 28/12/2017 - 01/01/2018	71.550	64.452	47.270	51.543	54.083

ANALYSIS MOVEMENT OF AVERAGE OVER/(UNDER) RECOVERY

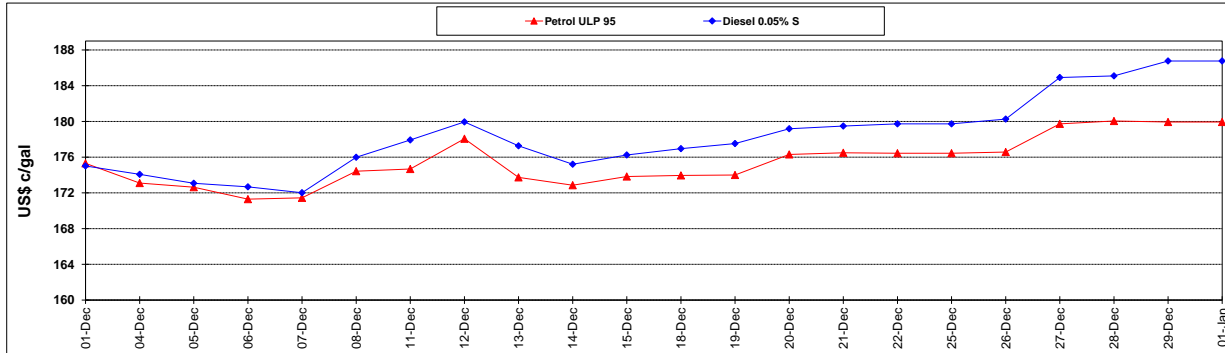
	PETROL 95	PETROL 93	DIESEL 0.05%	DIESEL 0.005%	ILL. PAR.
- MOVEMENT IN INTERNATIONAL PRODUCT PRICES	25.848	19.486	(0.123)	3.991	6.416
- MOVEMENT IN EXCHANGE RATE	45.702	44.966	47.393	47.552	47.667
AVERAGE UNIT OVER/(UNDER) RECOVERY 28/12/2017 - 01/01/2018	71.550	64.452	47.270	51.543	54.083

R/\$ EXCHANGE RATE - (R/\$ 12.3308 - 01/01/2018)

EXCHANGE RATE USED IN BASIC FUEL PRICE



INTERNATIONAL PRODUCT PRICES OF BASKET USED IN BASIC FUEL PRICE



BASIC FUEL PRICE IN SA CENTS PER LITRE

