

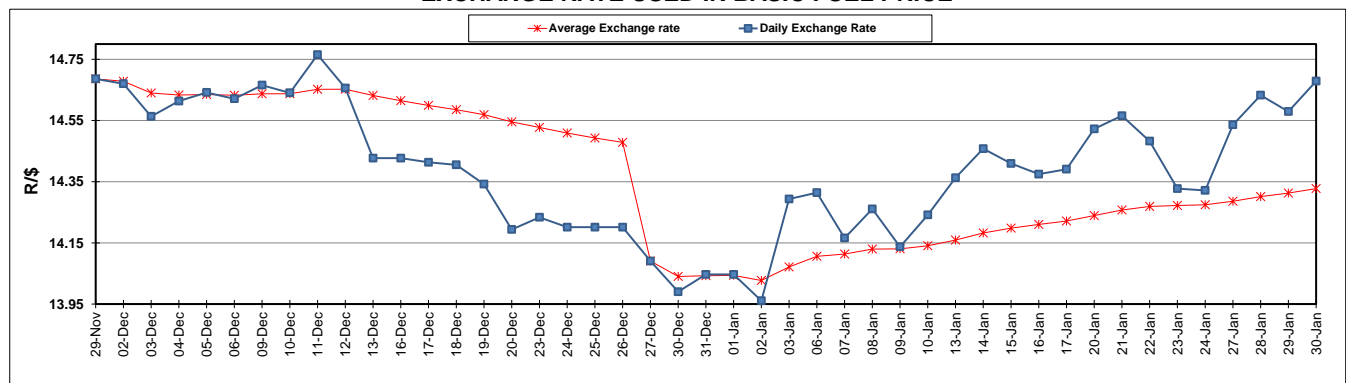
	PETROL 95 ULP	PETROL 93 ULP & LRP	DIESEL 0.05%	DIESEL 0.005%	ILL. PAR.
GAUTENG PUMP PRICE (SA c/l) AS FROM 01/01/2020	1,616.000	1,584.000	-	-	-
WHOLESALE PRICE (SA c/l) AS FROM 01/01/2020	-	-	1,462.260	1,467.660	927.728
SINGLE NATIONAL MAXIMUM RETAIL PRICE	-	-	-	-	1,180.000
BASIC FUEL PRICE - 30/01/2020 (SA c/l)	655.376	643.621	678.179	683.086	675.308
PRESS RELEASE CONTRIBUTION TO BFP 01/01/2020 - 30/01/2020 (SA c/l)	699.970	677.970	742.630	748.030	737.128
UNIT OVER/(UNDER) RECOVERY - 30/01/2020 (SA c/l)	44.594	34.349	64.451	64.944	61.820
AVERAGE BASIC FUEL PRICE 27/12/2019 - 30/01/2020	690.129	676.426	736.149	741.214	732.941
AVERAGE UNIT OVER/(UNDER) RECOVERY 27/12/2019 - 30/01/2020	12.193	2.696	5.401	5.736	3.587

ANALYSIS MOVEMENT OF AVERAGE OVER/(UNDER) RECOVERY

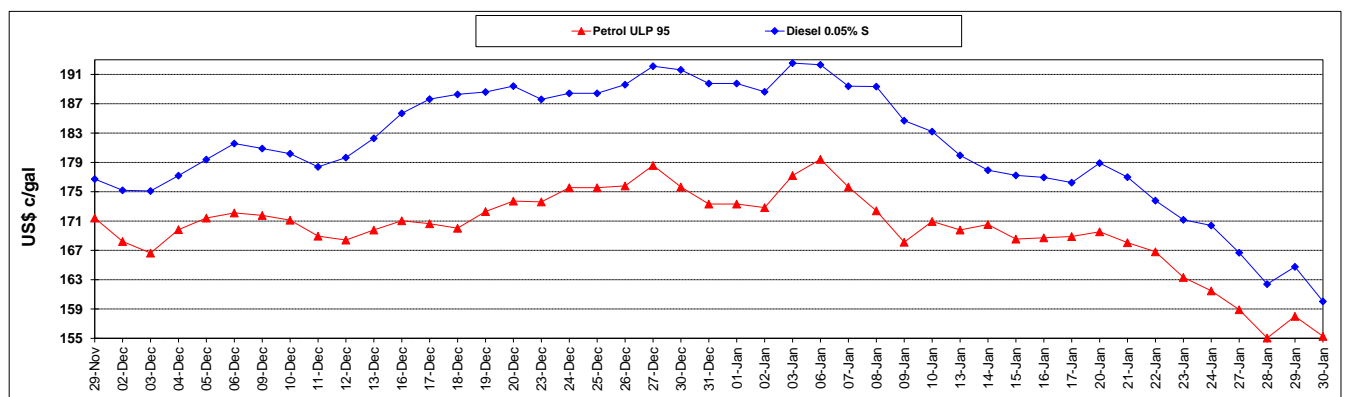
	PETROL 95	PETROL 93	DIESEL 0.05%	DIESEL 0.005%	ILL. PAR.
- MOVEMENT IN INTERNATIONAL PRODUCT PRICES	4.929	(4.423)	(2.347)	(2.065)	(4.127)
- MOVEMENT IN EXCHANGE RATE	7.264	7.119	7.748	7.801	7.714
AVERAGE UNIT OVER/(UNDER) RECOVERY 27/12/2019 - 30/01/2020	12.193	2.696	5.401	5.736	3.587

R/\$ EXCHANGE RATE - (R/\$14.6788 - 30/01/2020)

EXCHANGE RATE USED IN BASIC FUEL PRICE



INTERNATIONAL PRODUCT PRICES OF BASKET USED IN BASIC FUEL PRICE



BASIC FUEL PRICE IN SA CENTS PER LITRE

