

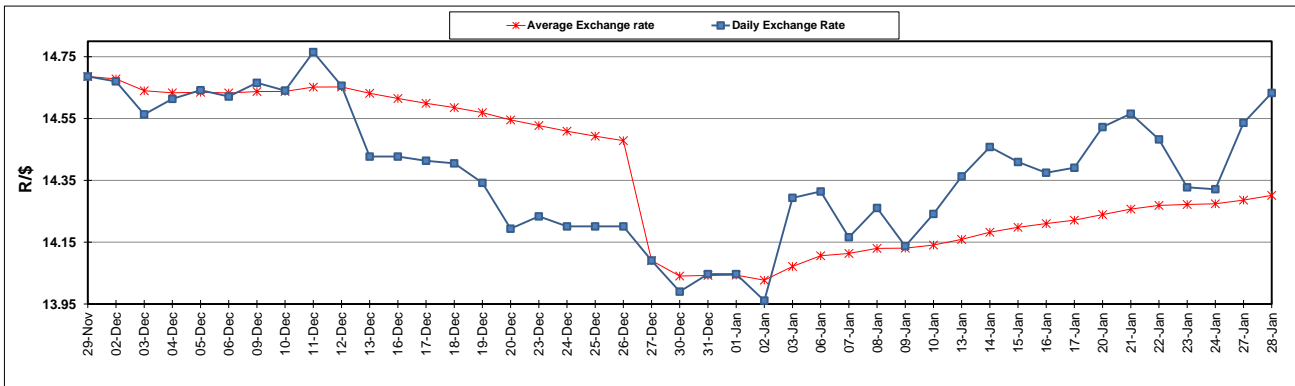
	PETROL 95 ULP	PETROL 93 ULP & LRP	DIESEL 0.05%	DIESEL 0.005%	ILL. PAR.
GAUTENG PUMP PRICE (SA c/l) AS FROM 01/01/2020	1,616.000	1,584.000	-	-	-
WHOLESALE PRICE (SA c/l) AS FROM 01/01/2020	-	-	1,462.260	1,467.660	927.728
SINGLE NATIONAL MAXIMUM RETAIL PRICE	-	-	-	-	1,180.000
BASIC FUEL PRICE - 28/01/2020 (SA c/l)	652.459	639.441	685.210	689.761	688.908
PRESS RELEASE CONTRIBUTION TO BFP 01/01/2020 - 28/01/2020 (SA c/l)	699.970	677.970	742.630	748.030	737.128
UNIT OVER/(UNDER) RECOVERY - 28/01/2020 (SA c/l)	47.511	38.529	57.420	58.269	48.220
AVERAGE BASIC FUEL PRICE 27/12/2019 - 28/01/2020	692.883	679.058	740.594	745.680	737.133
AVERAGE UNIT OVER/(UNDER) RECOVERY 27/12/2019 - 28/01/2020	9.643	0.164	0.862	1.176	(0.657)

### ANALYSIS MOVEMENT OF AVERAGE OVER/(UNDER) RECOVERY

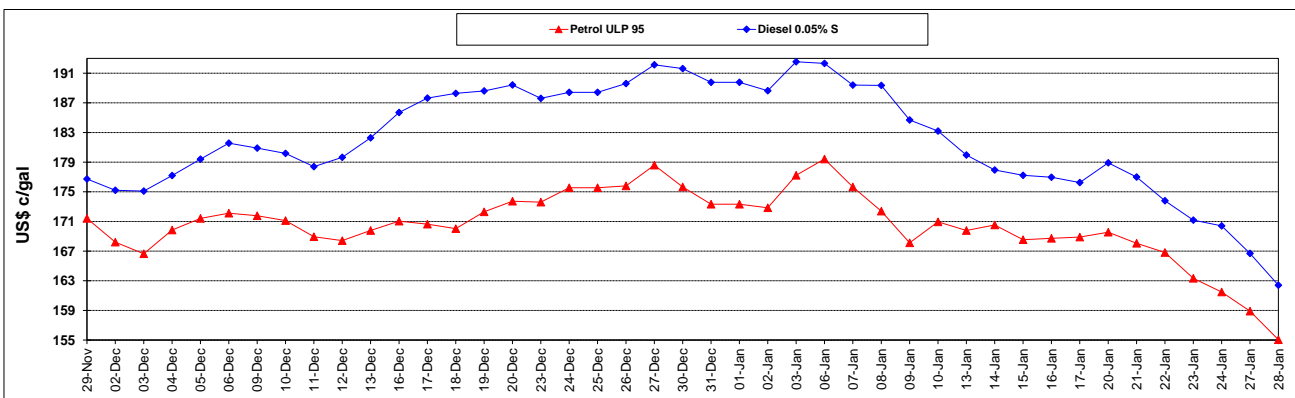
	PETROL 95	PETROL 93	DIESEL 0.05%	DIESEL 0.005%	ILL. PAR.
- MOVEMENT IN INTERNATIONAL PRODUCT PRICES	1.069	(8.240)	(8.304)	(8.053)	(9.780)
- MOVEMENT IN EXCHANGE RATE	8.575	8.404	9.166	9.229	9.123
AVERAGE UNIT OVER/(UNDER) RECOVERY 27/12/2019 - 28/01/2020	9.643	0.164	0.862	1.176	(0.657)

R/\$ EXCHANGE RATE - (R/\$14.6327 - 28/01/2020)

### EXCHANGE RATE USED IN BASIC FUEL PRICE



### INTERNATIONAL PRODUCT PRICES OF BASKET USED IN BASIC FUEL PRICE



### BASIC FUEL PRICE IN SA CENTS PER LITRE

