

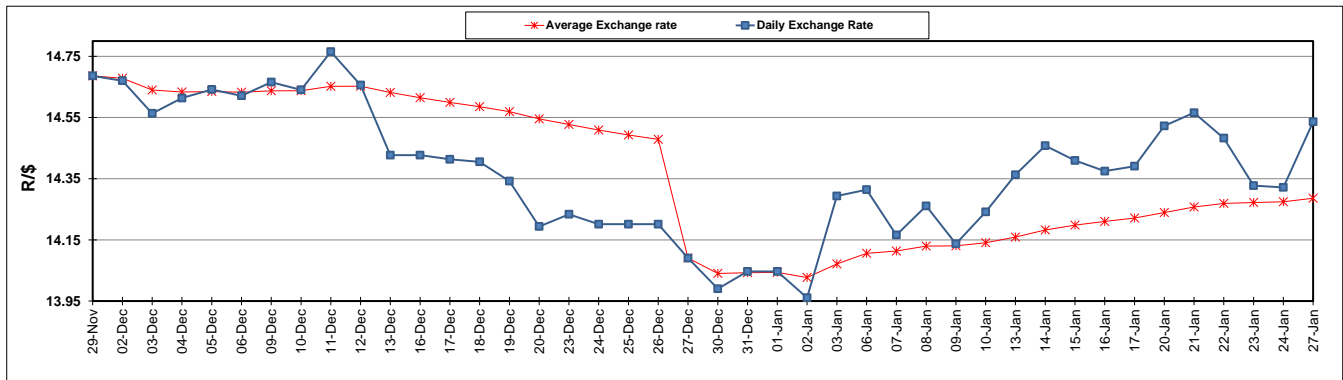
	PETROL 95 ULP	PETROL 93 ULP & LRP	DIESEL 0.05%	DIESEL 0.005%	ILL. PAR.
GAUTENG PUMP PRICE (SA c/l) AS FROM 01/01/2020	1,616.000	1,584.000	-	-	-
WHOLESALE PRICE (SA c/l) AS FROM 01/01/2020	-	-	1,462.260	1,467.660	927.728
SINGLE NATIONAL MAXIMUM RETAIL PRICE	-	-	-	-	1,180.000
BASIC FUEL PRICE - 27/01/2020 (SA c/l)	656.883	643.583	690.645	695.297	694.939
PRESS RELEASE CONTRIBUTION TO BFP 01/01/2020 - 27/01/2020 (SA c/l)	699.970	677.970	742.630	748.030	737.128
UNIT OVER/(UNDER) RECOVERY - 27/01/2020 (SA c/l)	43.087	34.387	51.985	52.733	42.189
AVERAGE BASIC FUEL PRICE 27/12/2019 - 27/01/2020	689.424	675.562	737.422	742.532	733.940
AVERAGE UNIT OVER/(UNDER) RECOVERY 27/12/2019 - 27/01/2020	13.219	3.717	3.981	4.270	2.506

ANALYSIS MOVEMENT OF AVERAGE OVER/(UNDER) RECOVERY

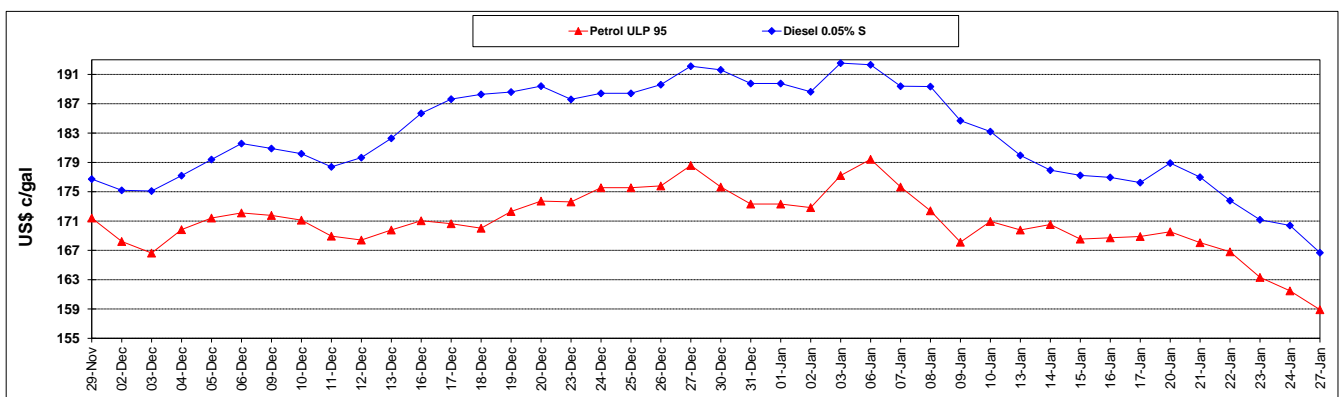
	PETROL 95	PETROL 93	DIESEL 0.05%	DIESEL 0.005%	ILL. PAR.
- MOVEMENT IN INTERNATIONAL PRODUCT PRICES	3.949	(5.367)	(5.935)	(5.713)	(7.363)
- MOVEMENT IN EXCHANGE RATE	9.270	9.084	9.916	9.984	9.869
AVERAGE UNIT OVER/(UNDER) RECOVERY 27/12/2019 - 27/01/2020	13.219	3.717	3.981	4.270	2.506

R/\$ EXCHANGE RATE - (R/\$14.5360 - 27/01/2020)

EXCHANGE RATE USED IN BASIC FUEL PRICE



INTERNATIONAL PRODUCT PRICES OF BASKET USED IN BASIC FUEL PRICE



BASIC FUEL PRICE IN SA CENTS PER LITRE

