

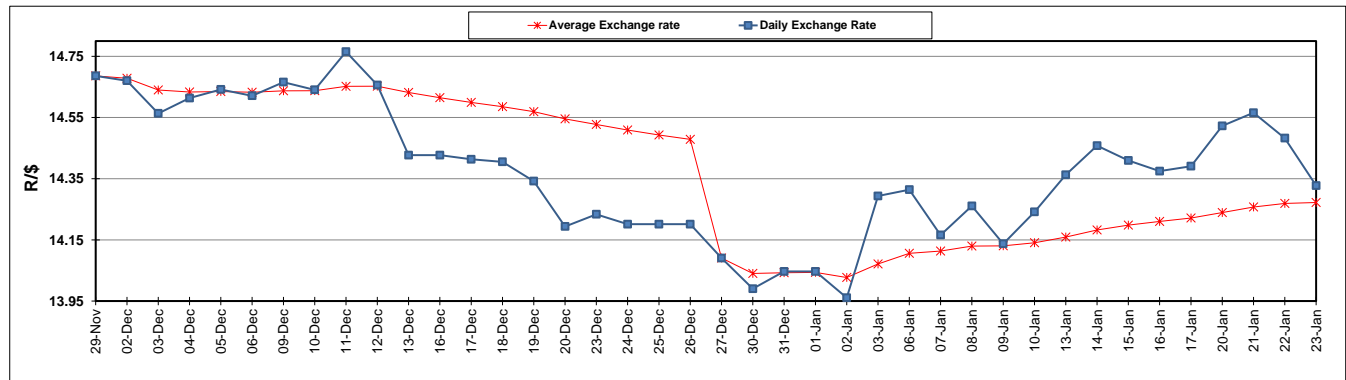
	PETROL 95 ULP	PETROL 93 ULP & LRP	DIESEL 0.05%	DIESEL 0.005%	ILL. PAR.
GAUTENG PUMP PRICE (SA c/l) AS FROM 01/01/2020	1,616.000	1,584.000	-	-	-
WHOLESALE PRICE (SA c/l) AS FROM 01/01/2020	-	-	1,462.260	1,467.660	927.728
SINGLE NATIONAL MAXIMUM RETAIL PRICE	-	-	-	-	1,180.000
BASIC FUEL PRICE - 23/01/2020 (SA c/l)	664.401	651.900	697.952	702.466	700.797
PRESS RELEASE CONTRIBUTION TO BFP 01/01/2020 - 23/01/2020 (SA c/l)	699.970	677.970	742.630	748.030	737.128
UNIT OVER/(UNDER) RECOVERY - 23/01/2020 (SA c/l)	35.569	26.070	44.678	45.564	36.331
AVERAGE BASIC FUEL PRICE 27/12/2019 - 23/01/2020	692.668	678.740	741.897	747.077	737.650
AVERAGE UNIT OVER/(UNDER) RECOVERY 27/12/2019 - 23/01/2020	10.242	0.670	(0.617)	(0.397)	(1.272)

### ANALYSIS MOVEMENT OF AVERAGE OVER/(UNDER) RECOVERY

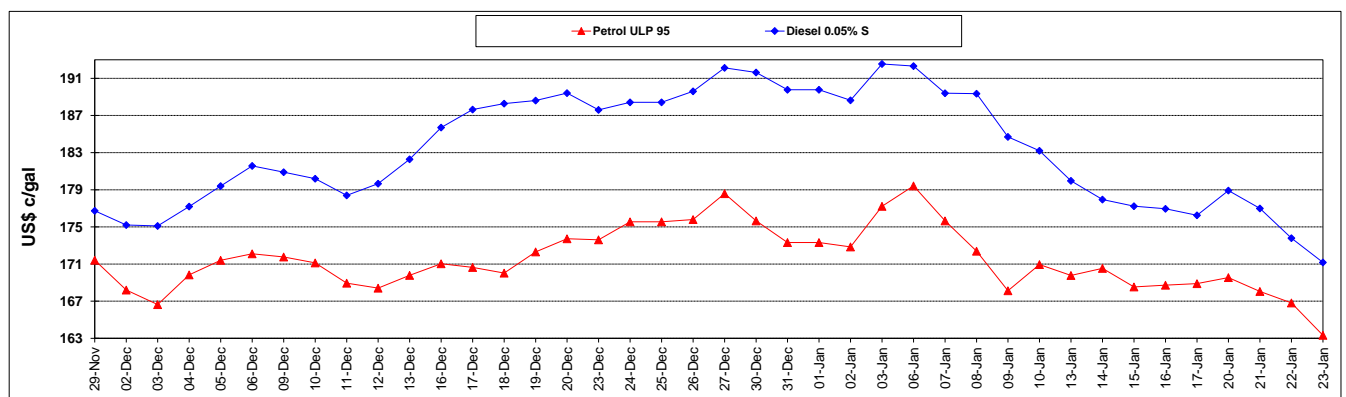
	PETROL 95	PETROL 93	DIESEL 0.05%	DIESEL 0.005%	ILL. PAR.
- MOVEMENT IN INTERNATIONAL PRODUCT PRICES	0.230	(9.141)	(11.341)	(11.196)	(11.935)
- MOVEMENT IN EXCHANGE RATE	10.012	9.811	10.724	10.799	10.663
AVERAGE UNIT OVER/(UNDER) RECOVERY 27/12/2019 - 23/01/2020	10.242	0.670	(0.617)	(0.397)	(1.272)

**R/\$ EXCHANGE RATE - (R/\$14.3275 - 23/01/2020)**

### EXCHANGE RATE USED IN BASIC FUEL PRICE



### INTERNATIONAL PRODUCT PRICES OF BASKET USED IN BASIC FUEL PRICE



### BASIC FUEL PRICE IN SA CENTS PER LITRE

