

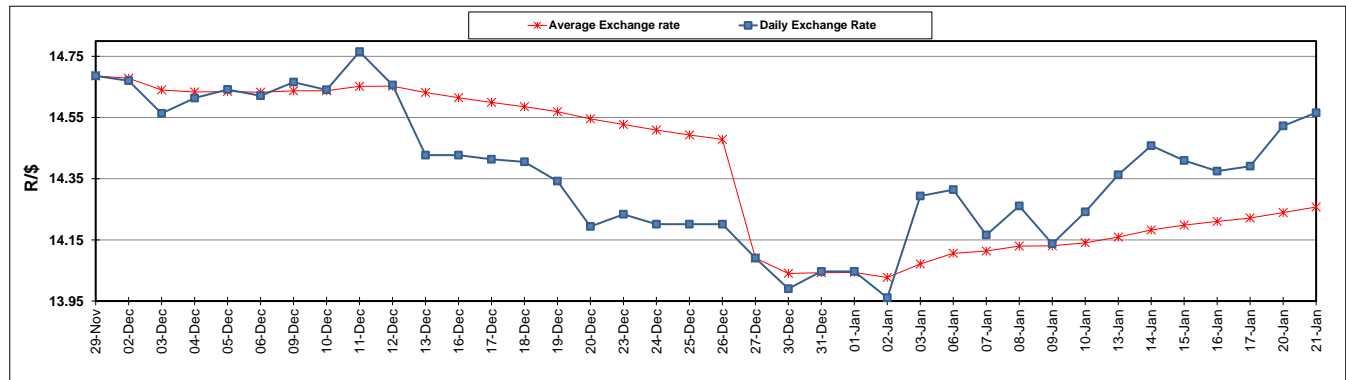
	PETROL 95 ULP	PETROL 93 ULP & LRP	DIESEL 0.05%	DIESEL 0.005%	ILL. PAR.
GAUTENG PUMP PRICE (SA c/l) AS FROM 01/01/2020	1,616.000	1,584.000	-	-	-
WHOLESALE PRICE (SA c/l) AS FROM 01/01/2020	-	-	1,462.260	1,467.660	927.728
SINGLE NATIONAL MAXIMUM RETAIL PRICE	-	-	-	-	1,180.000
BASIC FUEL PRICE - 21/01/2020 (SA c/l)	693.577	683.340	731.923	736.484	732.858
PRESS RELEASE CONTRIBUTION TO BFP 01/01/2020 - 21/01/2020 (SA c/l)	699.970	677.970	742.630	748.030	737.128
UNIT OVER/(UNDER) RECOVERY - 21/01/2020 (SA c/l)	6.393	(5.370)	10.707	11.546	4.270
AVERAGE BASIC FUEL PRICE 27/12/2019 - 21/01/2020	694.670	680.591	745.806	751.062	740.852
AVERAGE UNIT OVER/(UNDER) RECOVERY 27/12/2019 - 21/01/2020	8.567	(1.021)	(4.676)	(4.532)	(4.557)

ANALYSIS MOVEMENT OF AVERAGE OVER/(UNDER) RECOVERY

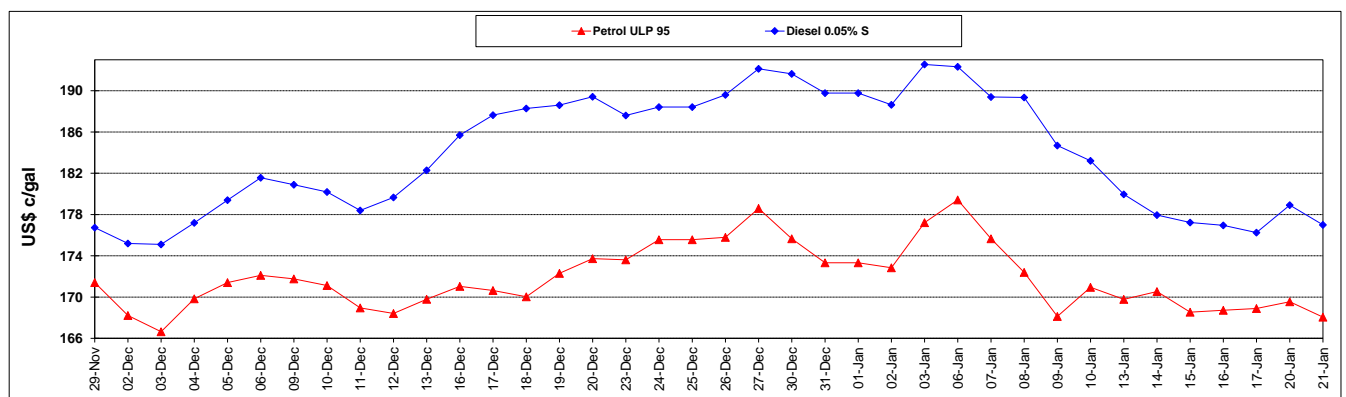
	PETROL 95	PETROL 93	DIESEL 0.05%	DIESEL 0.005%	ILL. PAR.
- MOVEMENT IN INTERNATIONAL PRODUCT PRICES	(2.206)	(11.575)	(16.242)	(16.179)	(16.046)
- MOVEMENT IN EXCHANGE RATE	10.773	10.554	11.566	11.647	11.489
AVERAGE UNIT OVER/(UNDER) RECOVERY 27/12/2019 - 21/01/2020	8.567	(1.021)	(4.676)	(4.532)	(4.557)

R/\$ EXCHANGE RATE - (R/\$14.5656 - 21/01/2020)

EXCHANGE RATE USED IN BASIC FUEL PRICE



INTERNATIONAL PRODUCT PRICES OF BASKET USED IN BASIC FUEL PRICE



BASIC FUEL PRICE IN SA CENTS PER LITRE

