

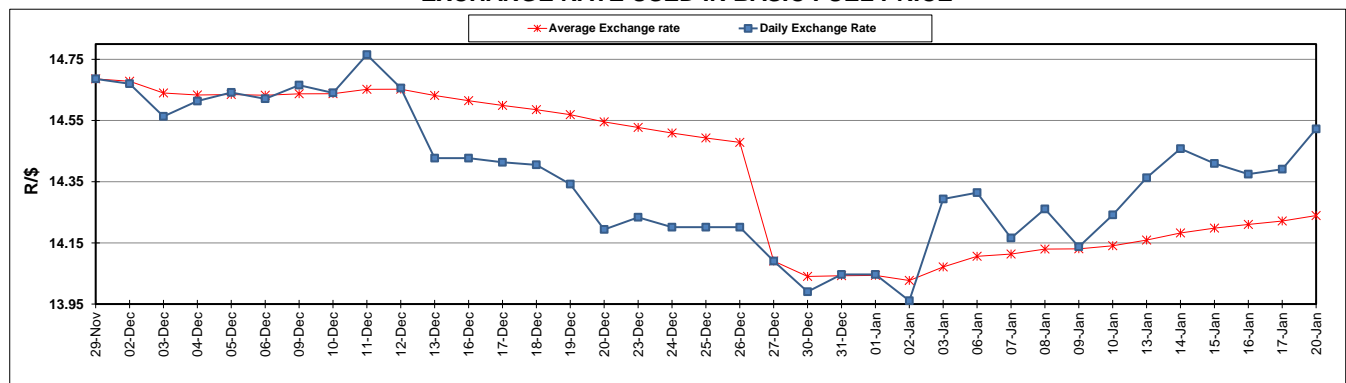
	PETROL 95 ULP	PETROL 93 ULP & LRP	DIESEL 0.05%	DIESEL 0.005%	ILL. PAR.
GAUTENG PUMP PRICE (SA c/l) AS FROM 01/01/2020	1,616.000	1,584.000	-	-	-
WHOLESALE PRICE (SA c/l) AS FROM 01/01/2020	-	-	1,462.260	1,467.660	927.728
SINGLE NATIONAL MAXIMUM RETAIL PRICE	-	-	-	-	1,180.000
BASIC FUEL PRICE - 20/01/2020 (SA c/l)	697.299	685.186	737.206	741.736	739.854
PRESS RELEASE CONTRIBUTION TO BFP 01/01/2020 - 20/01/2020 (SA c/l)	699.970	677.970	742.630	748.030	737.128
UNIT OVER/(UNDER) RECOVERY - 20/01/2020 (SA c/l)	2.671	(7.216)	5.424	6.294	(2.726)
AVERAGE BASIC FUEL PRICE 27/12/2019 - 20/01/2020	694.734	680.429	746.622	751.919	741.322
AVERAGE UNIT OVER/(UNDER) RECOVERY 27/12/2019 - 20/01/2020	8.694	(0.765)	(5.581)	(5.477)	(5.076)

ANALYSIS MOVEMENT OF AVERAGE OVER/(UNDER) RECOVERY

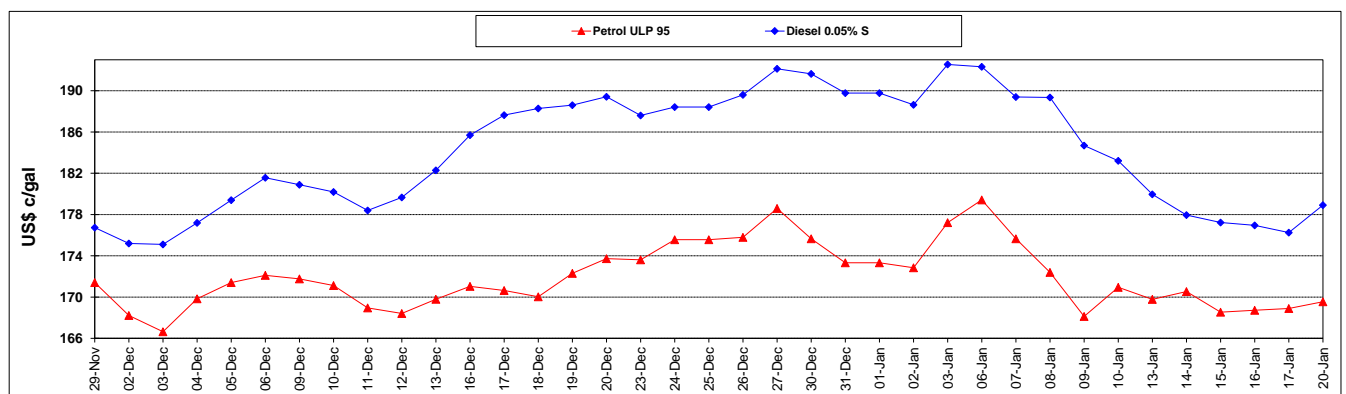
	PETROL 95	PETROL 93	DIESEL 0.05%	DIESEL 0.005%	ILL. PAR.
- MOVEMENT IN INTERNATIONAL PRODUCT PRICES	(2.976)	(12.195)	(18.122)	(18.108)	(17.529)
- MOVEMENT IN EXCHANGE RATE	11.671	11.430	12.542	12.631	12.453
AVERAGE UNIT OVER/(UNDER) RECOVERY 27/12/2019 - 20/01/2020	8.694	(0.765)	(5.581)	(5.477)	(5.076)

R/\$ EXCHANGE RATE - (R/\$14.5225 - 20/01/2020)

EXCHANGE RATE USED IN BASIC FUEL PRICE



INTERNATIONAL PRODUCT PRICES OF BASKET USED IN BASIC FUEL PRICE



BASIC FUEL PRICE IN SA CENTS PER LITRE

