

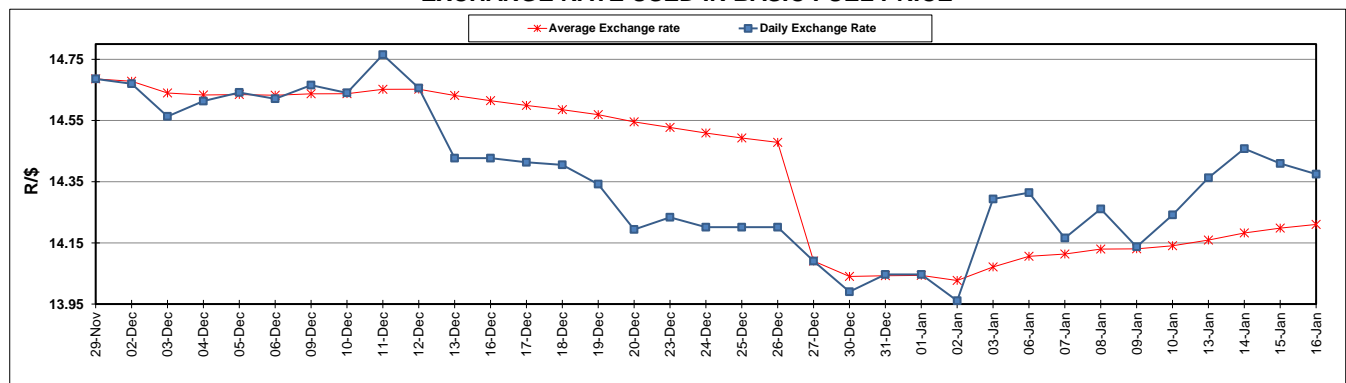
	PETROL 95 ULP	PETROL 93 ULP & LRP	DIESEL 0.05%	DIESEL 0.005%	ILL. PAR.
GAUTENG PUMP PRICE (SA c/l) AS FROM 01/01/2020	1,616.000	1,584.000	-	-	-
WHOLESALE PRICE (SA c/l) AS FROM 01/01/2020	-	-	1,462.260	1,467.660	927.728
SINGLE NATIONAL MAXIMUM RETAIL PRICE	-	-	-	-	1,180.000
BASIC FUEL PRICE - 16/01/2020 (SA c/l)	687.270	674.843	722.433	727.283	723.560
PRESS RELEASE CONTRIBUTION TO BFP 01/01/2020 - 16/01/2020 (SA c/l)	699.970	677.970	742.630	748.030	737.128
UNIT OVER/(UNDER) RECOVERY - 16/01/2020 (SA c/l)	12.700	3.127	20.197	20.747	13.568
AVERAGE BASIC FUEL PRICE 27/12/2019 - 16/01/2020	694.975	680.326	748.998	754.382	742.612
AVERAGE UNIT OVER/(UNDER) RECOVERY 27/12/2019 - 16/01/2020	8.915	(0.436)	(8.168)	(8.152)	(6.484)

ANALYSIS MOVEMENT OF AVERAGE OVER/(UNDER) RECOVERY

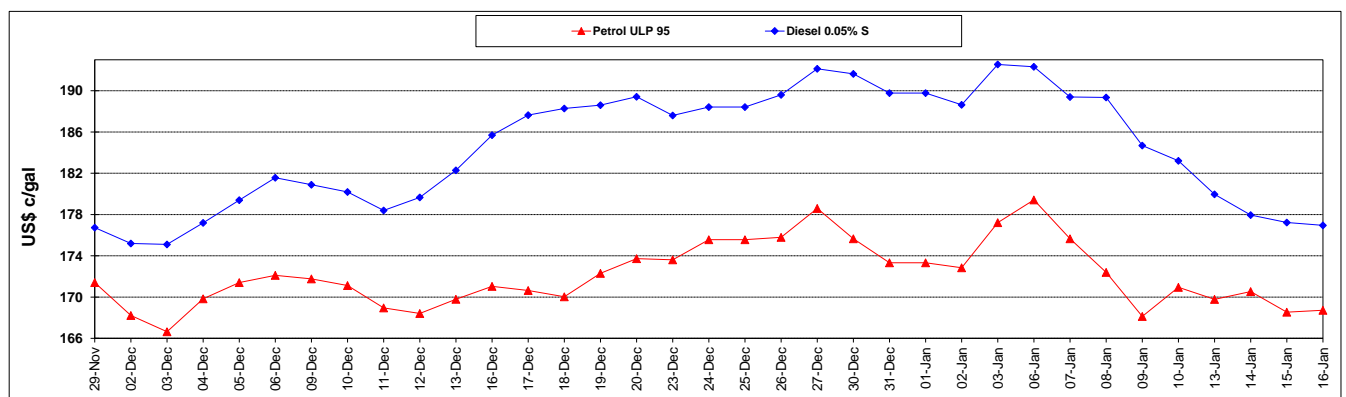
	PETROL 95	PETROL 93	DIESEL 0.05%	DIESEL 0.005%	ILL. PAR.
- MOVEMENT IN INTERNATIONAL PRODUCT PRICES	(4.202)	(13.276)	(22.304)	(22.390)	(20.500)
- MOVEMENT IN EXCHANGE RATE	13.117	12.840	14.136	14.238	14.016
AVERAGE UNIT OVER/(UNDER) RECOVERY 27/12/2019 - 16/01/2020	8.915	(0.436)	(8.168)	(8.152)	(6.484)

R/\$ EXCHANGE RATE - (R/\$14.3746 - 16/01/2020)

EXCHANGE RATE USED IN BASIC FUEL PRICE



INTERNATIONAL PRODUCT PRICES OF BASKET USED IN BASIC FUEL PRICE



BASIC FUEL PRICE IN SA CENTS PER LITRE

